

CENTRAL STATES WATER

The Official Magazine of the Central States Water Environment Association, Inc.

99TH ANNUAL MEETING

MAY 19-21, 2026 | RIVERCENTRE – ST. PAUL, MN

Flowing Together:
Connecting the Water Workforce



PLUS:

- 2026 Officer Nominations
- 31st Annual Education Seminar Preview
- 2025 Operations Challenge

Central States Water Environment Association
1021 Alexandra Blvd., Crystal Lake, IL 60014
ADDRESS SERVICE REQUESTED

All trademarks owned by Lakeside Equipment Corporation.
© 2026 Lakeside Equipment Corporation.



LOOKING FOR A SCREW PUMP UPGRADE THAT'S BABA-COMPLIANT? LAKESIDE REPLACES ALL BRANDS & TYPES...AND MEETS REQUIREMENTS.

Lakeside's screw pumps offer the ideal and cost-effective "drop in" replacements for less reliable designs. Improve pumping performance and reduce maintenance costs with our superior dual upper bearing design and heavy-duty self-aligning lower bearing designs. For decades we've been the go-to source for replacing all screw pump brands. Replacements typically require little or no structural modifications. It's what you expect from Lakeside Equipment—known for nearly a century for efficient and dependable operation in all wastewater, drainage and industrial applications.

For more information on how you can achieve Lakeside quality and performance, contact one of our experts at **630.837.5640**, email us at sales@lakeside-equipment.com or visit our website www.lakeside-equipment.com.



Cleaner Water for a Brighter Future®



Screw Pumps

Open Screw Pumps
Enclosed Screw Pumps

Longopac® Fill

**The closed bag system
for screenings and grit.**

- Mounts to existing equipment
- Increased odor control
- Minimized mess
- Very robust, 90m, (295') long continuous feed, non-porous, polythene bag
- More than 20,000 installations worldwide

**Contact chris.pettigrew@paxxo.com
for more information**

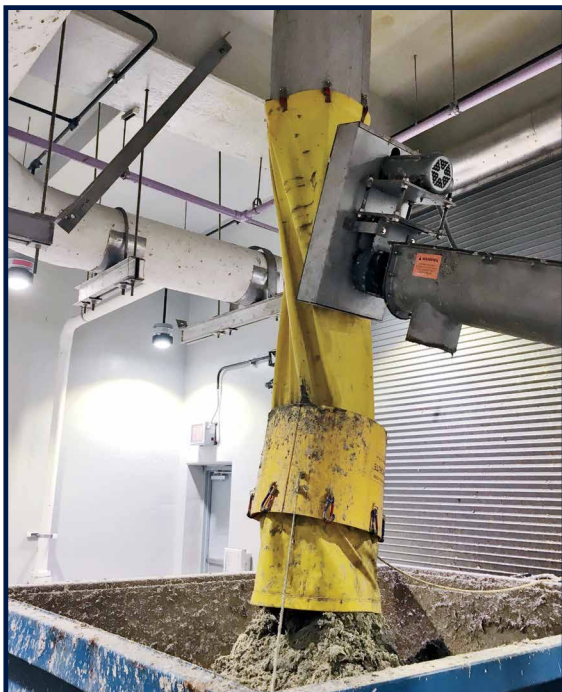


Paxxo Inc.

1924 Millard Farmer Road, Newnan, GA 30263

www.paxxo.com.

Phone. +1 770 502 0055 Fax. + 1 770 502 0088



BEFORE



AFTER



CUSTOM FIBERGLASS BUILDINGS & ENCLOSURES FOR BRUTAL ENVIRONMENTS



ANY SIZE. ANY COLOR. ANY USE.
CALL US TODAY
AVERAGE LEAD TIME: 6 - 8 WEEKS



920-696-5570 | www.mekco.com



FEATURES

| | |
|--|----|
| 2026 Officer Nominations | 17 |
| CSWEA Plant Profile: Green Bay Metropolitan Sewerage District | 21 |
| 31st Annual CSWEA Education Seminar Preview | 29 |
| CSWEA's 99th Annual Meeting | 35 |
| WEFTEC 2025 Operations Challenge Recap | 57 |

DEPARTMENTS

Messages


| | |
|-------------------------------|----|
| President's Message | 7 |
| WEF Delegates' Message | 8 |
| Advertiser Information Center | 62 |

CSWEA/WEF News

| | |
|--------------------------------|----|
| Member Profile: James Kerrigan | 18 |
| 2026 Events Calendar | 60 |

Section News

| | |
|---------------------------------|----|
| Wisconsin Section Chair Message | 11 |
| Minnesota Section Chair Message | 12 |
| Illinois Section Chair Message | 14 |

Follow us on  @cswea Link up with CSWEA on  **LinkedIn**

Published by:



Tel: (866)985-9780 Fax: (866) 985-9799
 www.kelmanonline.com info@kelman.ca
 Design/Layout: Dani Goulet
 Marketing Manager: Jeff Kutny, jeff@kelman.ca
 Advertising Co-ordinator: Stefanie Hagidiakow
 Federal tax# 23-7378788

©2026 Craig Kelman & Associates Ltd.
 All rights reserved. The contents of this publication, which does not necessarily reflect the opinion of the publisher or the association, may not be reproduced by any means, in whole or in part, without the prior written consent of the publisher.

Central States Water, the official magazine of the Central States Water Environment Association, Inc., is published four times per year. Send comments, news items, gloss photographs or digital images to Mohammed Haque, mhaque@cswea.org

Send undeliverable addresses to: CSWEA, 1021 Alexandra Blvd, Crystal Lake, Illinois 60014



President
 Tim Wedin
 Metropolitan Council
 P: 651-602-4571
 timothy.wedin@metc.state.mn.us

1st Vice President
 Rich Hussey
 LAI, Ltd.
 P: 847-392-0990
 rhussey@lai-ltd.com

2nd Vice President
 Mary-Frances Klimek
 Racine Wastewater Utility
 P: 262-636-9521
 maryfrances.klimek@cityofracine.org

Treasurer
 Alan Grooms
 Madison Metropolitan SD
 P: 608-222-1201
 alang@madsewer.org

Immediate Past President
 Troy Larson
 Strand Associates, Inc.
 P: 608-251-4843
 troy.larson@strand.com

WEF Delegate '23-'26
 Anna Munson
 Hazen and Sawyer
 P: 612-309-9333
 amunson@hazenandsawyer.com

WEF Delegate '25-'28
 Autumn Fisher
 Donohue & Associates, Inc.
 P: 920-539-2993
 afisher@donohue-associates.com

PWO Representative '25-'27
 Eric Lynne
 Donohue
 P: 952-920-1811
 elynne@donohue-associates.com

S & YP Representative '25-'26
 Rahim Ansari
 Jacobs
 rahim.ansari@jacobs.com

Minnesota State Section Trustee '24-'26
 Jackie Strait
 HR Green
 P: 651-659-7734
 jstrait@brgreen.com

Illinois State Section Trustee '25-'27
 James Kerrigan
 Fox Metro WRD
 P: 630-301-6866
 jkerrigan@foxmetro.org

Wisconsin State Section Trustee '25-'27
 David Diehl
 Black & Veatch
 P: 414-455-1607
 diehldl@bv.com

Follow us on  @cswea
 Link up with CSWEA on  **LinkedIn**

PERSPECTIVES

ON WATER

Navigating things like new regulations, technology, and funding can be challenging. Join our team as we share perspectives on all things water.



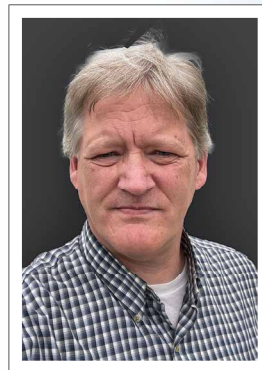
Award-Winning Best Place to Work

WATER ENGINEERING & BEYOND

**Water Engineering | Wastewater Engineering | Water Resources Engineering
Financial/Funding | Utility Planning**

Flowing Together:

Celebrating Technical Excellence and Connection at CSWEA



By Timothy Wedin

Over the past year, I have shared with you the Strategic Initiatives that we identified after our 2024-member survey. These initiatives were themes that were important to you, that needed to be developed and improved. Just as important to you were the areas that you saw CSWEA doing well; the Technical Excellence that you have come to expect from the Association.

We have long prided ourselves on the excellent technical programming that we offer. Over the past few years, we've added opportunities for learning, branching out beyond conferences and seminars to offer webinars and on-line training while still maintaining the high technical quality that you expect.

That's not to say that we haven't worked to improve our technical offerings. Our YP committee is launching a new YP Summit to be held on May 19th, prior to the Annual Meeting. Participants will have an opportunity to learn about variety of topics, such as skills related to facility design, troubleshooting, and project management skills. We are excited to be kicking off this Summit, which we see as further developing on the Soft Skills track that was offered at the 98th Annual Meeting.

The Technical Excellence that you have come to expect from CSWEA will be on full display May 19 through 21 at the 99th Annual Meeting at the St Paul RiverCentre! The LAC and I are excited for you to join us at the conference, where our theme will be Flowing Together: Connecting the Water Workforce. The Technical Committee and the LAC have worked hard over this past year to curate a high-quality Technical Program, paired with fun and exciting tours that highlight some of the region's Water Resource Recovery Facilities and Stormwater Facilities. Register now at www.CSWEA.org!

“The 99th Annual Meeting will showcase the technical excellence CSWEA members expect – paired with new learning opportunities and meaningful connections.”

As I close out my time as president, I want to thank all of you for the work that you do for CSWEA. Together, we help fulfill our mission: to facilitate connection, training, and technical excellence for current and future water professionals. **CS**

EMERGENCY CHLORINE SHUTOFF SYSTEM

Now With More Alarm Outputs -
“Low Battery” & “Not Armed and Ready”

- ◆ Closes valve within seconds
- ◆ Fire code approved as alternative for scrubber in most states
- ◆ Compatible with all direct mount vacuum regulators
- ◆ No tools or adapters required for installation on valve




www.halogenvalve.com



Building Momentum into 2026

By Anna Munson and Autumn Fisher



Anna Munson



Autumn Fisher

As the Water Environment Federation (WEF) House of Delegates (HOD) moves into 2026, the focus remains on strengthening connections between Member Associations (MAs), expanding leadership development opportunities, and ensuring the water profession continues to evolve with changing industry needs. The December 2025 Quarterly HOD Meeting provided valuable updates on WEF initiatives, upcoming events, and new tools to support collaboration and engagement across the federation.

Strengthening Communication and Engagement

One of the most notable developments is the continued rollout of **WEF Unity**, a centralized online platform that now houses documents for the HOD and the Community Leadership Council (CLC), along with forums for discussion and collaboration. This resource is designed to streamline communication between delegates, committees, and WEF staff while improving access to reference materials and best practices. Additional training and content will be released in 2026 to help maximize its use.

The **WEF Community Engagement Team** also announced leadership updates, with Amy Kathman stepping into the Senior Manager role for HOD committees and work groups, while Kelsey Hurst continues to lead WEFMAX and broader community engagement efforts. These transitions aim to strengthen support for delegates and improve coordination across the organization.

Culture, Belonging, and Workforce Development

WEF's former DEI Committee has officially been renamed the **Culture and Belonging Committee**, reflecting a broader focus on creating inclusive, welcoming environments throughout the water sector. The HOD has aligned with this change, and new efforts are underway to support Member Associations in developing similar initiatives.

A webinar titled *"From Service to Solutions: Recognizing & Elevating Veterans in the Water/Wastewater Industry"* was held on January 28, 2026, highlighting workforce recruitment opportunities and honoring veterans transitioning into water careers. Quarterly Culture and Belonging calls have also been established to continue this important dialogue throughout the year.

Advocacy and Industry Visibility

The **National Water Policy Fly-In** is scheduled for **April 14–15, 2026**, providing water professionals an opportunity to engage directly with policymakers on critical water issues. Grants will again be available for students and young professionals to support participation.

WEF continues to raise the profile of the water profession through high-visibility media outreach. **WEFTEC 2025** set new attendance

records with over 23,000 participants and more than 1,000 exhibitors. The event also featured a Water AI Center of Excellence, reflecting growing interest in artificial intelligence to enhance utility operations. WEF was further highlighted on the cover of *The Wall Street Journal*, bringing national attention to the importance of water infrastructure and operations.

WEFMAX: Collaboration Across Member Associations

WEFMAX (WEF Member Association eXchange) remains a cornerstone for sharing best practices and strengthening MA-to-MA connections. The 2026 WEFMAX schedule includes:

- **Montreal, Canada** – April 22–24
(Theme: MA-to-MA Collaboration)
- **Pittsburgh, Pennsylvania** – May 6–8
(Theme: Operator Engagement)
- **Bend, Oregon** – May 27–29
(Theme: Channeling the Undercurrents)
- **Virtual WEFMAX** – July/August

WEF has increased its financial support for host associations to \$25,000 per event and expanded the hosting window from February through late June. Hosting a WEFMAX offers MAs a chance to showcase their strengths, connect with peers nationwide, and elevate leadership development, though it also requires significant planning and coordination.

Supporting Delegate Participation

The HOD leadership continues to encourage Member Associations to consider financial support for delegate travel. Without MA assistance, the costs of attending WEF meetings often fall to individual delegates or their employers, which can limit participation from public-sector professionals. Several MAs currently offer reimbursement for WEFMAX, WEFTEC, and Fly-In travel, and the HOD has emphasized the value delegates bring back to their associations through national engagement.

Looking Ahead

The House of Delegates enters 2026 with strong momentum. Work Groups focused on **Water for AI and AI for Water, International MA Development, MA-to-MA Engagement, and MA/CLC Advocacy** are actively developing tools, surveys, and resources to support Member Associations.

For CSWEA members, these initiatives offer opportunities to stay connected to national conversations, learn from peer associations, and contribute to shaping the future of the water profession. Whether through WEFMAX, advocacy efforts, leadership training, or Culture and Belonging initiatives, WEF continues to provide pathways for engagement, growth, and collaboration. [CS](#)

Process. Control. Service.

Energenecs

WWW.ENERGENECS.COM
800-343-6337

CELEBRATING *50 YEARS*
OF PROVIDING OUR
CUSTOMERS WITH THE PEACE
OF MIND THAT THEIR PROJECTS
WILL BE DONE RIGHT



Strong Seal Manhole Lining

REPUTATION

Just one of the core values we live by every day at



800-876-8478

www.visu-sewer.com

Inside Drops for Manholes

Stop wasting resources on outside drops!

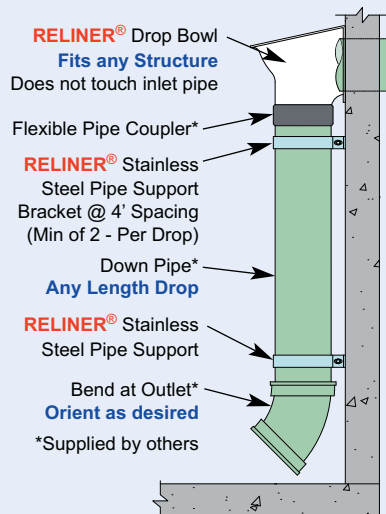
Find out why sewer districts throughout the USA are specifying RELINER® products



Photo by Central Industrial Contractors

Manhole Inside Drop

- Eliminate outside drops
- Reduce maintenance
- Simplify cleaning
- Stop Corrosion
- Install Quickly



Outlet sizes to service
4" lateral drops through
24" wet well drops

RELINER®/Duran Inc.
www.reliner.com 1-800-508-6001



Now available
in 304 & 316
Stainless

AIS Compliant

Stainless Pipe Supports

- Adjustable, non-corrosive
- 11 gauge 304 or 316 SS
- Supports the pipe fully
- 1.5"-30" dia. in stock
- Easy to install

BURN THE CLIPBOARDS

Simple Software



Waterly

Waterly does not recommend burning anything that wasn't meant to be burned. In fact, please keep your clipboards...just in case. We support water humans with simple maintenance and data management software that gives you back time and reduces violations. Scan the code or visit waterly.com for a free hoodie and a demo.

Join Us This Spring: Learning, Networking, and the 99th Annual Meeting



By Lindsey Busch

“On behalf of the Wisconsin Section leadership team, thank you for your continued commitment to CSWEA. I appreciate the time, energy, and expertise you contribute, and I look forward to seeing many of you at our upcoming events.”

Congratulations on surviving another long, cold winter in Wisconsin! As we transition out of winter operations and into warmer-weather priorities, it’s a great time to reconnect, share knowledge, and invest in our professional community.

One of the highlights this spring is the 99th Annual Meeting, taking place **May 19–21** in **St. Paul, Minnesota**. This long-standing event remains a cornerstone of CSWEA, offering high-quality technical programming, networking opportunities, and a chance to connect with colleagues from across the region. I encourage members to attend and help make this nearly century-old tradition another great success.

Our wastewater professionals also have several excellent learning opportunities coming up. The **Classic Collections System Seminar** will be held on **June 4**, followed by **CSX** on **July 23–24**, which continues to be a collaborative event where all the state sections can learn from each other. All members are welcome to attend. Later in the summer, the **Northwoods Collections System Seminar** on



July 30 provides another opportunity to learn, connect, and share experiences in a more localized setting.

These events reflect the strength and diversity of our section and the dedication of the volunteers who make them possible. Whether you’re attending a seminar, participating in CSX, or engaging at the annual meeting, your involvement helps strengthen our profession and our organization.

We currently have several open spots on our committees, and we’re always looking for new volunteers to get involved. If you’re interested or have questions about

where you might fit in, please reach out to our Membership Committee Chair, **Autumn Fisher** (afisher@donohue-associates.com). There’s a place for everyone – whether you’re new to CSWEA or looking to take on a larger role.

On behalf of the Wisconsin Section leadership team, thank you for your continued commitment to CSWEA. I appreciate the time, energy, and expertise you contribute, and I look forward to seeing many of you at our upcoming events.

Wishing you a productive and refreshing spring. 



- SCADA Systems
- Custom Controls
- System Integration
- Prefabricated Structures
- PLC & HMI Programming

For over 20 years, Starnet has been providing custom solutions to the water & wastewater industry, with a focus on operator safety. Visit us and discover an innovative answer for your application.

Call Us: (262) 886-0228

StarnetTech.com • ArrowStations.com • ArcSafe.com



Collaborative Leadership: Accomplishing More Together



By Shanna Czeck

The water sector is complex, interconnected, and requires many disciplines. We have a lot of moving parts and many voices to be heard. Owners, operators, consultants, contractors, regulators, community members – the list could keep going. In my opinion, getting work done effectively and efficiently requires a collaborative approach. Collaborative leadership can harness the collective strengths of a group to fully understand a project or problem, improve decision making, and save time and resources. I prefer a collaborative leadership approach in the workplace, and I am very proud of the collaborative leaders that I see across the CSWEA.

I have previously shared that the MN Section has filled all committee chair roles. This was critical and has improved how the Section is



operating. Committees are working together to advance initiatives that were identified earlier in the year, and the outcome has been excellent. The Young Professional and Public Education committees worked together to design and purchase exhibitor booth materials to promote the CSWEA at local events. The MN Section Officers also worked to complete updates to the Section By-Laws which were finalized and approved in January.

All Committee Chairs were invited to be part of the planning committee for the Conference on the Environment which was held in November. Members from multiple

committees have been helping with planning the Innovative Conference which will be in February. With the 99th Annual Meeting in St. Paul, the Section has really pulled together to help with planning this event. The involvement of so many members distributes the workload and makes the experience especially rewarding for all involved.

A collaborative approach is happening at the association level as well. The Government Affairs Committees have been communicating to discuss committee operations and coordinate the WaterWeek Fly-In. The Public Education Committees coordinated efforts for the Water's Worth It Essay Contest that is concluding this spring. The R2E Committees worked together to review the R2E track in the Technical Program for the 99th Annual Meeting. This open communication is positively impacting the organization – learning from the experience of others and applying that knowledge to improve operations is a benefit to everyone involved.

Collaborative leadership continues to shape the future of CSWEA by fostering innovation, resilience, and continuous learning. The Annual Meeting is an excellent opportunity for us to gather, collaborate and exchange ideas. I am really looking forward to it and hope to see you all there. **CS**

Restore. Protect. Enhance.

CPP Sprayliner structural epoxy linings are designed for concrete structures, tanks, lift stations and manholes to protect against H₂S and seal inflow and infiltration (I&I). To learn more about these ultra-high build, fiber-reinforced, spray-applied linings, contact your local Tnemec representative.

Taylor Coating Sales, Inc.
Joshua Otten
 (630) 281-9594 jotten@tnemec.com
Erik Otten
 (708) 822-8323 eotten@tnemec.com

AECOM

Squaring the circle

Delivering a better world aecom.com/water

SULZER

Nordic Water

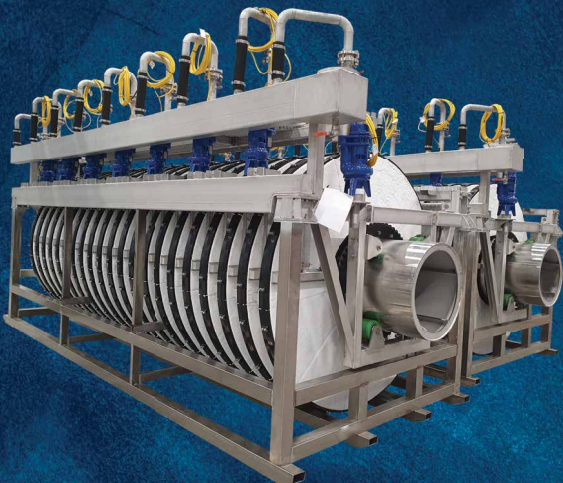
Performance you can count on. **A legacy you can trust.**

Trusted for your sedimentation and filtration needs, we have the experience, expertise and products to meet your specifications and exceed your expectations for efficiency, reliability and service.

Our SuperCloth fiber disc filter is a well proven technology that provides high quality effluent with low Total Suspended Solids (TSS). The SuperCloth fiber disc filters are available in multiple sizes to fit your footprint and application needs.

Whether optimizing performance, or addressing stringent environmental standards, we've got your back. Decades of Experience. A legacy of Performance.

Learn more about Sulzer | Nordic Water
go.sulzer.com/trusted-nw



Reflections from the Illinois Section: Connection, Community, and the Road Ahead



By Tom Romza

As I wrap up my term as Illinois Section Chair, I have decided to look back on the past year and the themes that kept resurfacing in my messages, which were connection, gratitude, and the continued momentum of our industry and our CSWEA community.

My first article talked about how meaningful it was to be inducted into the 7S Society. Beyond the honor, it reminded me of the people who nudged me early in my CSWEA involvement. I was encouraged to say yes to committees, volunteering, and opportunities a little outside my comfort zone. It reinforced how important it is that we keep pushing the next generation, especially as our industry navigates a major shift in experience and leadership.

My next article was about human connection inspired by hosting my first Illinois Section meeting and watching my son start kindergarten in the same week. Both experiences were good reminders that communities thrive when people show up, participate, and support one another. And while new technology continues to transform how we work, the relationships we build are still what really makes the difference.

My most recent article was about being busy. As I joked then, being busy isn't exactly a shocking revelation in the water and wastewater world. But it's a good kind of busy that tells us the work matters and that people rely



on what we do every day. We keep showing up because protecting public health and the environment is never done.

Looking Ahead

Thinking about passing the reigns to a few extremely helpful and qualified successors, I still am genuinely excited to stay involved and keep contributing however I can. CSWEA is at its best when members step up, get engaged, and bring their ideas to the table.

My hope is that the Illinois Section continues to grow in engagement, energy, and collaboration. Whether you're brand new or a seasoned veteran, there's a place for you here. And if you've been thinking about getting more involved, consider this your encouragement to take that step. Some of the most rewarding experiences in my career started with simply saying, "Sure, I can help with that."

Thank You

Serving as Illinois Section Chair has been an honor and a highlight of my career. I'm grateful for the experience, collaboration, and the people who make CSWEA what it is. So, thank you to everyone who supported the Section this year by donating your time and resources, your contributions, whether big or small, go a long way.

See you at the next event and as always, **Bear Down. CS**

**"CSWEA is at its best when members step up, get engaged,
and bring their ideas to the table."**

**EP
ELECTRIC PUMP**

**THE LARGEST PUMP SERVICE
ORGANIZATION
IN THE UPPER MIDWEST**

CONTACT US!
(515) 265-2222
ELECTRICPUMP.COM

IWC Environmental
FLYGT



LAI, Ltd.

Since 1958


EXPERT PUMP REPAIRS

NOW AVAILABLE!




Repairing pumps of any size with precision & care!



LAI, Ltd. is a manufacturers' representative firm serving the Water, Wastewater and Stormwater Markets in Northern Illinois, Northwestern Indiana, and Wisconsin since 1958. LAI is proud to partner with Kennedy Industries on select repairs. Together we offer the most advanced pump repair solutions. 

IL - 5400 Newport Drive, Ste 10 - Rolling Meadows, 60008

WI - 2935 S. Fish Hatchery Rd. #116 - Madison, 53711

 **IL** - 842.392.0990

 lai-ltd.com

 **WI** - 608.298.7271



SULZER

Protecting your community **one reliable solution at a time**

Every community relies on critical infrastructure to stay safe, healthy, and thriving. At Sulzer, we deliver innovative pumping, mixing, and treatment solutions that safeguard what matters most.

From stormwater management that prevents flooding, to wastewater treatment that ensures clean water, to pumping systems that keep essential services running, Sulzer products are at the heart of resilient communities. Whether it is hospitals, schools, or neighborhoods, our technology works behind the scenes to keep your water pumping.

Because when it comes to your community, reliability is not optional, it is essential. go.sulzer.com/one-reliable-solution-a-time



Locally represented by:
Midwest Pump Works
Phone: (515) 635-0025
Website: www.midwestpumpworks.com
Email: info@midwestpumpworks.com

2026

OFFICER NOMINATIONS



2nd VICE PRESIDENT – ERIC LYNNE

Eric's fascination with water began in childhood, manipulating puddles and tracing rills after a storm, not unlike Bluey in the "Rain" episode (IYKYK). A few decades later, that early curiosity has grown into a career at Donohue and a passion for serving the water community. Over the years, Eric has contributed to both WEF and CSWEA in a variety of leadership and hands-on roles. Being nominated as 2nd Vice President and stepping into the officer progression toward CSWEA President is a true honor. He has long admired the leaders who shaped the organization: from the late, great Rusty Schroedel with his perfectly delivered motions, to Keith Haas and his remarkable ability to approach new faces at every opportunity. Their example sets a high bar for leadership, professionalism, and connection. Now, as the opportunity becomes real, Eric recognizes that it is his turn to help make a lasting impact on the next generation of water professionals. Serving as the active CSWEA PWO, he has been inspired by the Ops Challenge teams as they remain engaged long after competitions end. Eric firmly believes that CSWEA is the premier place to build a meaningful, resilient, and connected career in the water sector and he looks forward to continuing to serve and strengthen the organization alongside its dedicated members.



WEF DELEGATE '26-'29 – CHRIS MARSCHINKE

Chris Marschinke has been a member of CSWEA since 2010 and joined WEF shortly thereafter in 2012. He began his service to the organization as the Illinois Section Students Committee Co-Chair under the exemplary tutelage of Michael Holland and quickly found that CSWEA offered a rewarding opportunity both professionally and personally. Chris continued his service to the organization on the SYP and Operations Committees, and after several years as Illinois Section Chair and Trustee. He also served as WEF SYP subcommittee chair for the Community Service Project in 2018, leading the Tremé Community Center project at WEFTEC New Orleans. Chris is a proud member of the CSWEA 7S Society and recipient of the Outstanding Young Professional Award. He currently works as a Senior Project Manager at Trotter and Associates, where he began as an intern in 2004. Chris serves TAI's municipal clients in evaluation, design, and construction of water and wastewater infrastructure solutions.



TREASURER – MIKE HOLLAND

Mike Holland has been an active member of CSWEA and WEF since he was first voluntold to in 2009. He has previously served on the CSWEA Executive Committee as Illinois Trustee and YP Representative and is a past President of the Illinois Association of Wastewater Agencies (IAWA). Mike has been involved with CSWEA in many ways over the years, including the Collection System Committee, Operations Committee, Students and Young Professionals Committee, Local Arrangements Committee and is currently the Illinois Section Treasurer and CSWEA Golden Manhole Chair. Mike has an undergraduate degree in Civil Engineering from the University of Illinois – Urbana/Champaign, master's degree in public administration from Northern Illinois University, holds a Professional Engineering license in Illinois and Wisconsin and is a Class 1 Wastewater Operator in Illinois. He is currently the Executive Director for the Flagg Creek Water Reclamation District.



STUDENT & YP REPRESENTATIVE – RAHIM ANSARI

Rahim Ansari joined the industry in 2021 and became involved with CSWEA early in his career, serving as Co Chair and later Chair of the Wisconsin Section Student and Young Professional (SYP) Committee from 2022 – 2025. As Chair, Rahim helped strengthen engagement among students and young professionals by organizing technical tours, webinars, panel discussions, leadership development workshops, and networking events. Rahim now serves as the Young Professional Representative on the CSWEA Executive Board, continuing to support the development of future industry leaders through his commitment to collaboration, community building amongst water professionals, and expanding professional growth opportunities for his fellow YPs. Rahim earned his bachelor's and master's degrees in Civil and Environmental Engineering from the University of Wisconsin–Madison and is a Water/Wastewater Engineer for Jacobs. [CS](#)



James Kerrigan

Senior Project Engineer

Fox Metro Water Reclamation District, Aurora, IL

In his role as Senior Project Engineer at Fox Metro Water Reclamation District, James Kerrigan works at the intersection of long-term capital planning and day-to-day plant operations. His mission is to ensure operators, electricians, maintenance, and technical staff have the tools they need to meet the district's permit requirements and keep the facility running smoothly.

James' journey into the wastewater industry began overseas and evolved through a range of roles. He started his career in Ireland, where he grew up in rural Galway and gained an appreciation for hands on construction and engineering through working on his small family farm and in the local construction industry. He earned his initial engineering diploma

in Ireland before completing his bachelor's degree in civil engineering in Edinburgh, Scotland. After graduating, he gained early experience with a consulting firm in Ireland, working on development projects, municipal infrastructure, and small-scale water and wastewater facilities. That foundation opened the door to opportunities in the United States, where he transitioned into a consulting role focused on water and wastewater design projects across the country.

After several years in consulting, James made the leap to the public sector, a decision he felt was intimidating, but ultimately was just as rewarding as his time in consulting. Over the past decade, he has worked with two large wastewater agencies in Illinois,

including the Fox River Water Reclamation District for almost ten years, before joining Fox Metro, where he has worked since. Along the way, he has contributed to a wide variety of projects, from phosphorus removal upgrades and pump station improvements to challenging construction efforts such as tunneling beneath the Fox River and designing infrastructure in constrained, river-adjacent environments.

In his current role, James is involved in a wide range of efforts, from coordinating major construction projects to working closely with consultants, contractors, and in-house staff on smaller upgrades. In a role that constantly evolves, James approaches engineering as a support function for the operators, electricians, technicians, and management staff who run



the plant. He emphasizes that every day is different and this variety is one of the aspects of the job he enjoys most.

Looking back, James finds the most rewarding projects are often the most difficult ones, those that require problem-solving in the field and close coordination between designers, contractors, and operations staff. He notes the easy jobs are all too easily forgotten. James takes particular satisfaction in revisiting facilities years later and seeing projects still in service, whether it's a building he helped design or upgrades he can point out (to hopefully somewhat interested family members) while driving past a former job site. Those moments, he says, bring perspective and humility when reflecting on design decisions made years earlier, especially when he's able to discuss his design with end users.

Throughout his career, James has witnessed significant changes in the industry, particularly in the growth of automation, instrumentation, and digital design tools. While he sees tremendous value in technologies like BIM modeling and advanced SCADA systems, he is equally passionate about preserving hands-on experience and institutional knowledge. He believes technology should complement, not replace, the instincts developed by experienced operators who can identify issues through sight, sound, and feel long before a specific alarm appears on a screen.

That philosophy extends to his advice for young professionals entering the field. James encourages younger employees to slow down, listen, and spend time in the field with experienced staff. Some of the most valuable lessons, he says, come not from drawings or reports, but from walking through a plant, riding along to a job site, and observing how seasoned operators and staff approach their work. James approaches every day as a learning opportunity and emphasizes the importance of curiosity, humility, and openness to learning from others at every stage of a career, a lesson that mentors strived to pass on to him ever since he graduated college.

James has also been heavily involved with the Central States Water Environment Association, where he first became engaged through conference participation and technical presentations. After initially attending only events and conferences, he became more engaged through committee work, took on leadership roles within the Young

Professionals group, and now serves as the Illinois Section's representative on the Central States Executive Committee. He dedicates much of his growth and opportunity in the Association to the unwavering support of former leaders who entrusted and encouraged him to take on more responsibility.

Outside of work, James enjoys traveling and spending time outdoors with his family. Originally from Ireland, he and his wife return whenever they can, where the landscape

offers a sense of calm and a chance to recharge. From hiking and fishing to hunting and exploring new places with his five boys (yes, five!), time outside gives James an opportunity to reset and stay connected with his family.

James treasures the connections he's made through CSWEA and is always glad to meet fellow members at conferences and events. So don't hesitate to say hello the next time you see him! **CS**

INDURON

PROTECTIVE COATINGS

LOOKING FOR QUALITY SALES REPRESENTATION

Induron Protective Coatings is seeking a top-tier sales professional who knows how to build relationships, solve problems, and win in the field.

If you're an A-player ready to represent industry-leading coating solutions, we want to hear from you.

CONTACT US

205-324-9584

INFO@INDURON.COM

WWW.INDURON.COM



SCAN ME

PROTECTING YOUR PLANT FROM THE VERY FIRST STEP



Municipal systems rely on strong front-line protection. In collections and headworks, even small debris can clog pumps, damage equipment, and disrupt operations. JWC Environmental (JWC) technologies are built to stop problems early. From reliable grinders to precise screening systems, JWC solutions protect downstream processes and keep operations running smoothly.



sales | service needs
800.331.2277
jwce.com



Authorized Representative

Treatment Resources Inc.

Gregg Backstrom: gbackstrom@treatmentresources.com

(651) 702-2692

www.treatmentresources.com



NEW Water, the brand of the Green Bay Metropolitan Sewerage District

By Tricia Garrison, APR, Public Affairs & Education Manager for NEW Water

All photos courtesy of NEW Water, the brand of the Green Bay Metropolitan Sewerage District



An aerial view of NEW Water's Green Bay Facility.

“Do you cool your food with impure ice and jeopardize your health?” asked a 1900s newspaper ad for “modern refrigerators” in Green Bay, Wisconsin. Ice harvesting for “ice boxes” was big business until the advance of river pollution, with its bad odors and threat of cholera.

Crews would even spray perfume onto the East River to mask the stench. It didn't help. With ever increasing fish kills and the public health threats caused by polluted waterways, “something” had to be done.

In 1931, a group of visionaries created the Green Bay Metropolitan Sewerage District,* which now serves an ever-growing community of more than 239,000. The regional clean water utility is a wholesale provider to 15 municipalities, as well as businesses, industries, and visitors. NEW Water cleans on average 41 million gallons each day between its two wastewater facilities in Green Bay and De Pere.

These days, NEW Water faces similar challenges to those across the clean water sector: aging infrastructure, workforce retirements, rising costs, regulatory pressures, impaired waterways, and ever-growing community needs.

NEW Water strives to provide cost-effective services, embrace innovation, and champion its workforce, whilst keeping an eye to the future. Here are some highlights of happenings from this clean water utility.

Planning for Continued Service: From Solids to Liquids

NEW Water has surveyed its municipal partners to find out: what is most important to them about NEW Water services? Consistently ranked #1 is “reliability.”

“Our community wants to know they don't have to worry about our services being there, 24-7-365, to support their needs,” said Nathan Qualls, P.E., NEW Water's Executive

Director. "NEW Water continually plans for the future by evaluating infrastructure condition and capacity needs. This critical infrastructure requires investment, in order to provide the reliable service our community expects."

Less than a decade ago, NEW Water completed significant upgrades with implementation of its Solids Facility Plan, which embraced sustainability in its approach: R2E2, or Resource Recovery and Electrical Energy facility. R2E2 saves about \$1.25 million a year in avoided energy costs, recovers heat for beneficial reuse, and uses anaerobic digestion and co-generation to produce nearly 40% of its electrical needs for its Green Bay Facility.

In 2022, the utility completed a Liquids Facility Plan, which is now being implemented through various capital projects. The Plan is a comprehensive look at process needs over the next 20+ years. The Plan addresses condition, performance and capacity gaps, develops infrastructure improvement packages, and evaluates project prioritization and cost impacts.

To manage cost impacts, NEW Water developed a Strategic Financial Plan in conjunction with the Facility Plan. The Strategic Financial Plan is a process to help mitigate large rate increases in any given year by forecasting future revenue requirements, evaluating the need for building and using capital reserves, as well as evaluating alternative project funding approaches.

Innovating for Energy & Cost Savings: Pilot Project

As part of the Liquids Facility Plan, it was determined that the secondary treatment process at both facilities would be upgraded, due to aging infrastructure, potential for energy savings, and improved performance to meet effluent permit limits now and in the future.

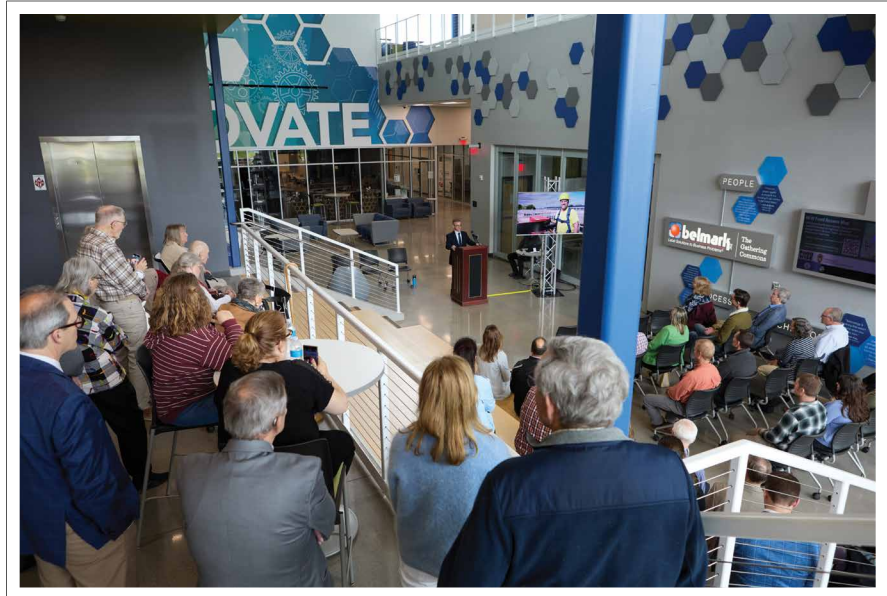
"Prior to making these investments, it is important to identify and test the impact of improvements on their ability to improve capacity, improve effluent quality, and lower energy usage," said Tyler Biese, NEW Water's Staff Engineer.

The team launched a South Plant Mixing Enhancement Study (targeted research pilot project), at its Green Bay Facility, which is currently underway. They wanted to test using less oxygen in the treatment process to save energy and get more robust biological nutrient removal.

Process modelling, coupled with historic operational data indicated that the facility would be a good candidate for a low dissolved oxygen operation. The pilot is testing how well the microorganisms, aka bugs, perform under varying anaerobic, anoxic, and



NEW Water's employees together in 2025



In 2024, Wisconsin Governor Tony Evers proclaimed May 22 as Wisconsin Wastewater Professionals Appreciation Day. NEW Water recognized this day by celebrating staff and welcoming the incoming Executive Director.

aerobic conditions, to maximize performance and reduce energy demands of the biological treatment process (see enclosed photograph).

Process air compressors at NEW Water are used to provide compressed air to the secondary treatment process and have been in nonstop operation since the 1970s. They are significant energy users and also are oversized for the need – which means there is substantial opportunity for energy savings with the next iteration of process design and equipment purchased in a future capital project.

"The pilot project is being done to inform the optimization of that design," said Jake Becken,

NEW Water's Treatment Manager. "This could mean a big operational cost savings for us and more resilient process performance."

Workforce Development

Emily Tietyen, NEW Water's Human Resources (HR) Manager, says investment in workforce development is critical to a healthy workforce. The biggest challenge she sees is general awareness of careers in the clean water sector.

"People know and appreciate water – but they don't know that there's work available to protect that resource," she said. "These roles offer

so much, such as connection to the community and the environment. It runs really deep.”

She supports focused efforts with educational institutions, career fairs, and additional outreach to increase awareness, which in turn boosts recruitment. Examples of this include an active educational outreach program, which features talks and tours with area schools, career and educational booths, and a STEAM Superheroes camp with the Boys & Girls Club.

For retention, she credits staff engagement, development opportunities, as well as membership in professional clean

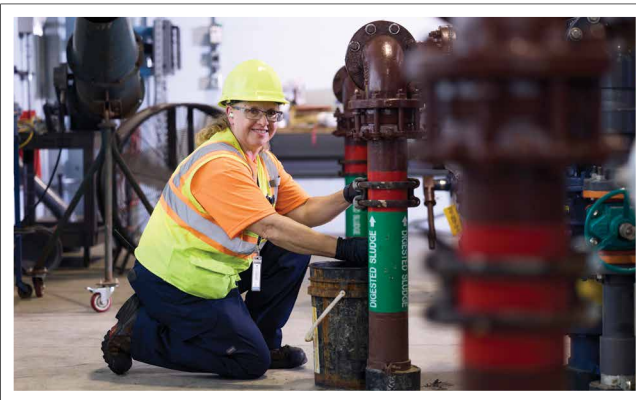
water organizations, such as Wisconsin Wastewater Operators Association, Central States Water Environment Association, and National Association for Clean Water Agencies (NACWA).

“It’s great to see our team not only participating in meetings and bringing ideas, but also taking leadership roles in these organizations,” she said. “It creates a deeper connection to the daily work and builds strong leaders for the future.”

To address the so-called “greying workforce,” she said that working internally

with managers is critical, for the transfer of institutional knowledge. This is accomplished in part by robust training and programs, including internships and apprenticeships, including a Youth Apprenticeship for high schoolers, as well as Apprenticeships for Electrical & Instrumentation, Mechanical and Operations. To achieve success, Tietyen advises utilities to prepare for a time commitment and to dedicate staff for support and training.

HR teamed up with Treatment and the Public Affairs & Education teams on a campaign to promote a new Apprenticeship position. The team



NEW Water’s Treatment Operator collecting a sample from the solids handling facility centrifuge.



Teamwork in action as NEW Water’s Utility Workers collaborate and review equipment.

DIXON ENGINEERING, INC.
Engineering and Inspection Services SINCE 1981

INSPECTION SERVICES
New Tank Construction Inspections
Dry and ROV Inspections
Annual Security Inspections
Coating Inspections
Warranty Inspections
Welding/Repair Inspections

ENGINEERING SERVICES
Long Term Maintenance Contracts
Antenna Design, Review, & Inspection
Tank Coating/Structural Repair Specifications
Coating System Failure Analysis
Treatment Plant Coating Specifications

Visit our website at www.dixonengineering.net for more information about these and our other services.
(800) 327-1578

TAP INTO SOUND SCIENCE

Looking for a safer and easier way to know which sewer lines need cleaning?

| | | |
|--|---|--|
| SAVE TIME Get a reading in 3 minutes or less with no flow contact. | SAVE MONEY Screen 2+ miles per day at a fraction of CCTV costs. | SAVE WATER Clean the pipes that truly need it. |
|--|---|--|

**Easy to use.
Light to carry.
EPA evaluated.**

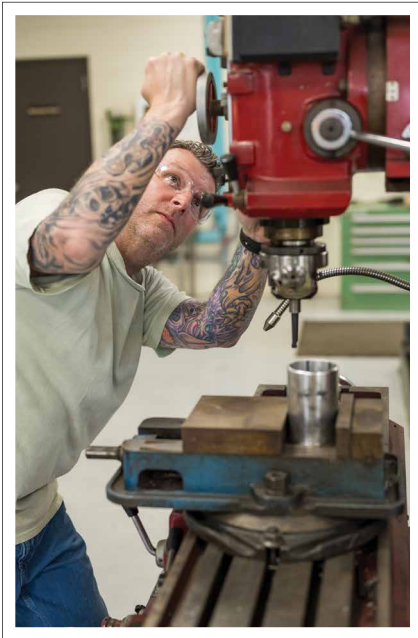
See and Hear the Difference

Request a Demo Today
877-747-3245 · infosense.com
sales@infosense.com

InfoSense, Inc

planned and implemented targeted outreach with technical colleges, career fairs, social media, and new videos with Tietyen and Becken. The campaign prompted a 148% increase in website traffic coming from social media.

"We had excellent response to the apprenticeship posting, gaining more interest than we had seen in previous offerings," said Becken. "I am a big fan of outreach, to get folks interested in the work we do, and perhaps to come work with us."



NEW Water's Maintenance Mechanic ensuring critical equipment operates efficiently to minimize downtime and maintain reliable service.

Water Reuse Project

Another innovation at NEW Water came from an area industry, which was looking to build a new paper mill, and implement a closed-loop water system in those operations. They approached NEW Water to see if it could be possible.

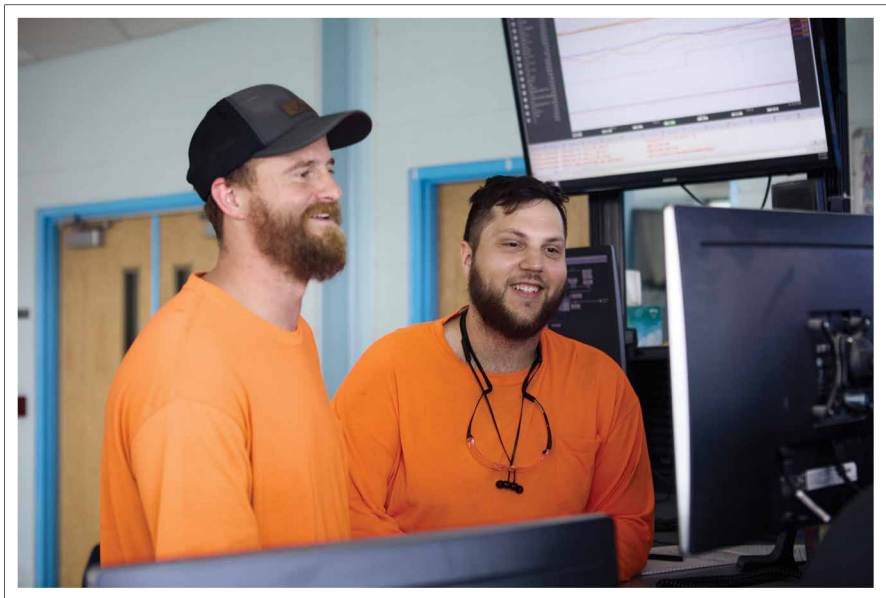
This unique reclaimed water system is the first in the state of Wisconsin. It allows the mill to operate with the water it needs without discharging a single drop of wastewater into the Fox River.

The mill's wastewater is discharged to NEW Water, where it is treated and returned

back to the company through an underground piping system.

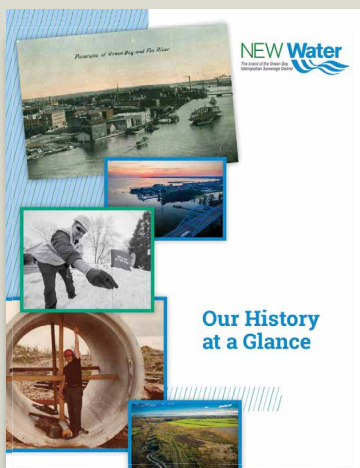
The initiative was possible thanks to a partnership established with the industry, as well as the county and NEW Water. The partnership reflects a community commitment to sustainability, and provides an economic boost to the area.

About one million gallons of water are cleaned and returned back to the mill, each day. This is the first time in NEW Water's history that the purple pipes, which signify water reuse, have been used, marking another exciting chapter in sustainability for the utility.

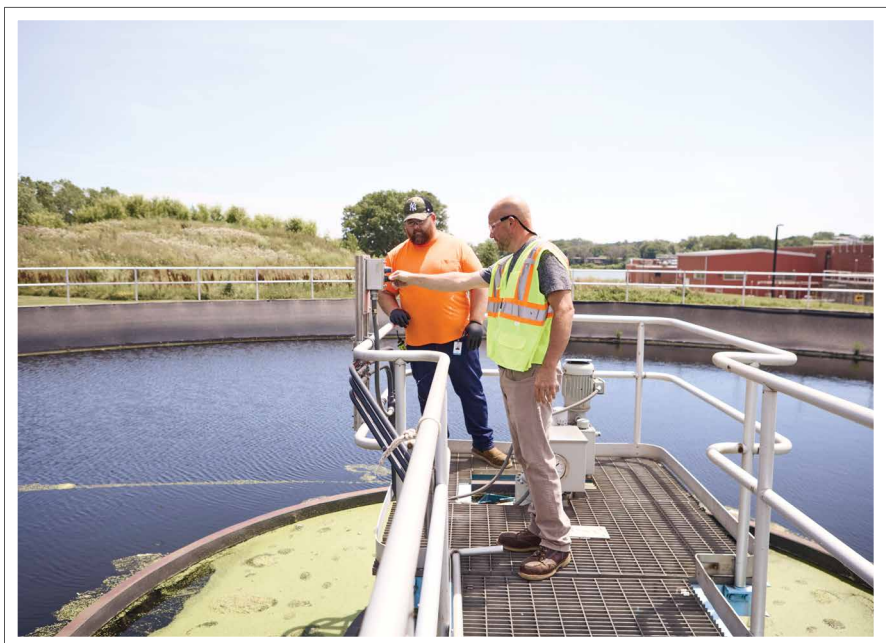


NEW Water's Treatment Operators are collaborating in the control room.

***Learn more about
NEW Water's history here:
[https://www.newwater.us/
about/history](https://www.newwater.us/about/history)**



**Our History
at a Glance**



NEW Water's Treatment Manager, Jake Becken, quoted in the article, mentoring the Operator Apprentice.

Advocating & Partnering for Clean Water

In December 2024, Nathan Qualls became Executive Director at NEW Water. With this, the team set out to expand outreach and engagement with community partners and audiences, including elected officials. In addition to engaging with key federal, county, and municipal leaders, NEW Water hosted all state elected officials in its service area for individual meetings and tours of its Green Bay Facility.

"This has been well worth the investment of time," said Qualls. "Developing relationships with our elected officials is an opportunity to enhance understanding of the critical services we provide for their constituents. I am grateful for their shared commitment to protecting our water resources."

In 2025, these relationships proved to be foundational to a state-wide effort for the protection of clean water.

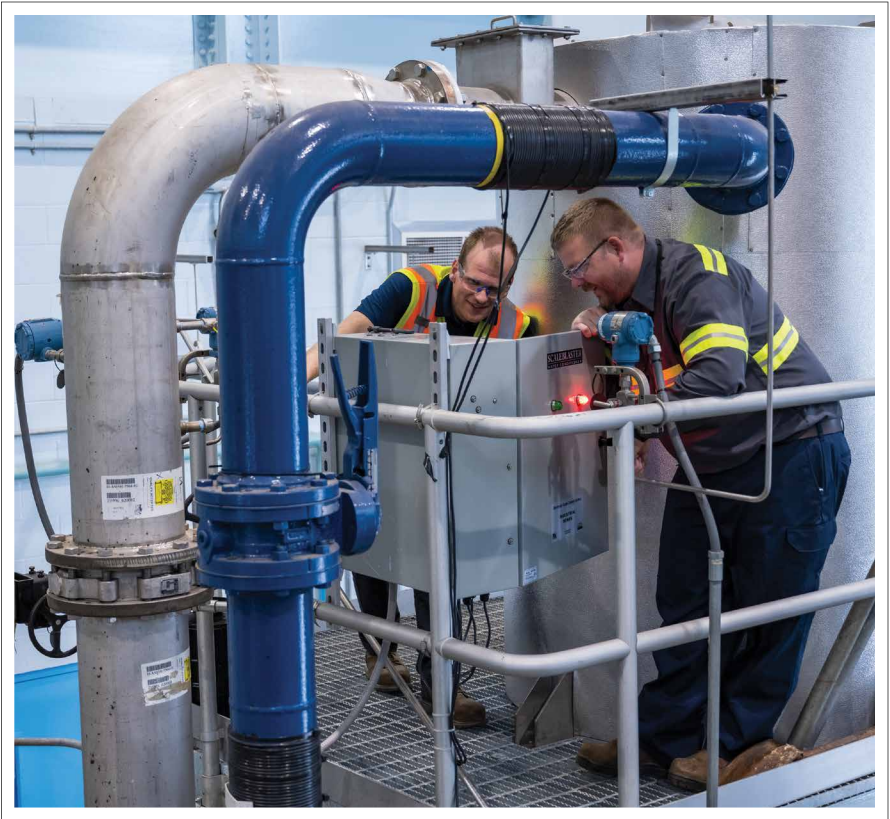
With wastewater utilities across the U.S. facing challenges with potential financing shortfalls at both the federal, and state levels, NEW Water dove in to advocate for these funds in 2025. NEW Water joined national efforts led by the National Association of Clean Water Agencies, by speaking with and sending letters to federal officials requesting support to address proposed budget cuts to the Clean Water and Drinking Water State Revolving Funds for critical sewer projects.

In Wisconsin, NEW Water joined a Clean Water Coalition of wastewater and water utilities, the Municipal Environmental Group, and the Wisconsin League of Municipalities, to advocate for increased bonding authority for the Wisconsin Department of Natural Resources to be able to adequately fund the Wisconsin Environmental Improvement Fund – which administers the Clean Water Fund.

Families, businesses, and industries in NEW Water's service area benefit greatly from these funding sources. NEW Water applies for and receives low-interest loans for infrastructure projects, without which costlier financing alternatives would be needed.

NEW Water engaged municipal partners on this effort as well, and greatly appreciates their support. In June 2025, the Wisconsin Joint Finance Committee voted unanimously (16-0) in support of this infrastructure funding.

"This victory truly shows the benefits of teamwork," said Toni Herkert, Government Affairs Director with the League of Wisconsin Municipalities. "Our coalition's education and advocacy efforts helped legislators understand the statewide need and beneficial impact



Cross-department collaboration with NEW Water's Staff Engineer, Tyler Biese, who is quoted in the article, about the dryer equipment operations.

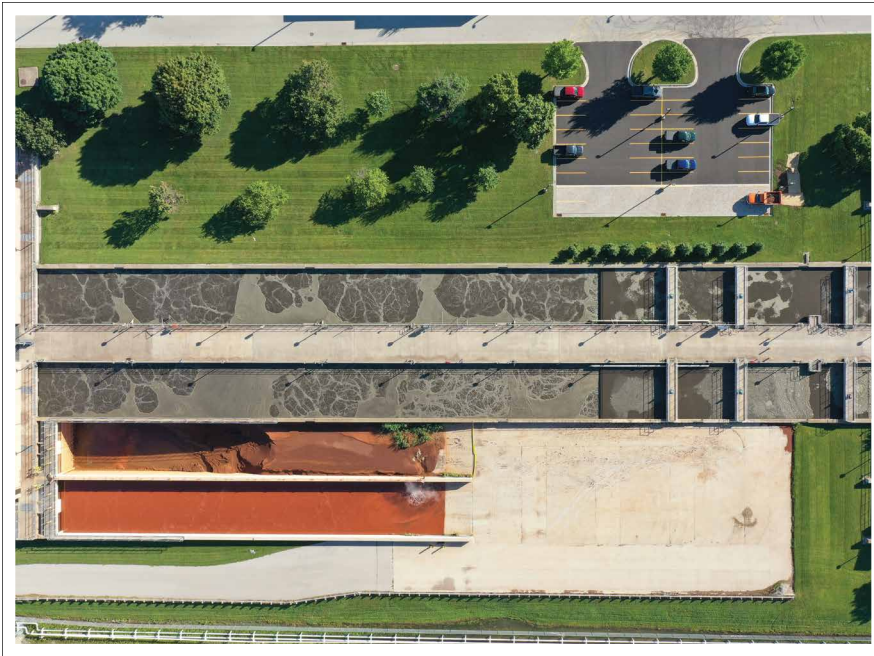
NEW Water Facilities & Processes

NEW Water owns and operates two wastewater facilities: the Green Bay Facility (GBF, average 33 mgd); the De Pere Facility (DPF, average 8 mgd). Processes include:

- GBF liquids: influent pumping, screening, primary clarification, primary sludge grit removal, activated sludge biological treatment, secondary clarification, and disinfection.
- GBF solids: sludge thickening, anaerobic digestion, dewatering, solids drying and incineration. A byproduct of anaerobic digestion is biogas used to generate electricity (approximately 40% of needs for the GBF).
- DPF liquids: screening, influent pumping, grit removal, activated sludge biological treatment, intermediate clarification, final clarification, disc filters, and disinfection.
- DPF solids: are piped to and treated at the GBF.



“From the perfume-masked rivers of the 1900s to today’s cutting-edge resource recovery, NEW Water continues to define its legacy through innovation and advocacy.”



NEW Water’s Green Bay Facility South Plant secondary treatment process currently undergoing a pilot project.

of our request. While the sticker shock of our ask was a significant hurdle, our coordinated messaging strategy made this request a reality.”

NEW Water is committed to building partnerships, and harnessing innovative watershed efforts, both of which help to protect receiving waters.

“We are temporary stewards of Wisconsin’s precious water resources, and our team is proud to serve,” said Qualls. “Our goal at NEW Water is to care for our infrastructure and our environment, and leave it in a better condition for generations to come. I am incredibly proud of the NEW Water team and the partnerships we have built to make this all possible.”

From the perfume-masked rivers of the 1900s to today’s cutting-edge resource recovery, NEW Water continues to define its legacy through innovation and advocacy. The utility remains a steadfast guardian of public health, by investing in its infrastructure and people, to ensure that its receiving waters are as clear as its vision. [CS](#)

Excellence in EngineeringSM



Channahon | Illinois



Mt Horeb | Wisconsin



Joliet | Illinois



www.strand.com
12 Locations Nationwide



Multidisciplinary firm serving public and private sectors



**EFFICIENCY
SAVES MONEY.**

**CONVENIENCE
SAVES TIME.**

WE OFFER BOTH.

It's the synergy that comes from supplying both pump equipment and electrical controls to operate those pumps. It's the one stop shop for selection and sizing as well as after-market service to the end user.

We sell solutions that provide the highest operational efficiency. We have premium-efficient pumps and motors along with advanced control strategies to reduce energy costs.

We understand your needs and the dynamics of your situation. We'll develop customized solutions and enhanced services that you can't find anywhere else. With one call, find out why L.W. Allen pumps and Altronex control systems have become the leading provider of pumps, controls, technical assistance and superior customer service.

**Reduce your energy costs and save time.
Call (800) 362-7266.**

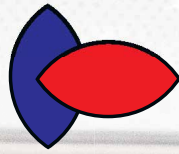
1802 Brackett Ave • Eau Claire, WI 54701
4633 Tompkins Drive • Madison, WI 53716
(608) 222-8622 • FAX (608) 222-9414 • www.lwallen.com



L.W. ALLEN
PUMP SYSTEMS®



ALTRONEX®
Control Solutions by SJE



Metropolitan Industries, Inc.



**Yes, we do that
—and more.**

*“From pump systems to complete water management solutions, **Metropolitan Industries** is your one-stop partner for engineered solutions.”*

(815) 886-9200 | METROPOLITANIND.COM



31ST ANNUAL CSWEA EDUCATION SEMINAR



APRIL 16TH
2026

FROM SMALL PLANTS TO BIG CHALLENGES: NUTRIENT REMOVAL, CONTROLS, AND EVOLVING REGULATIONS

FROM SMALL PLANTS TO BIG CHALLENGES:

Nutrient Removal, Controls, and Evolving Regulations:

Mark your calendars for the CSWEA 31st Annual Education Seminar to be held in person on April 16th, 2026 at the Monona Terrace in Madison, WI. We have an exciting program to discuss practical steps to implementing innovative nutrient removal technologies into full-scale treatment. Attendees will gain insights into incorporating advanced nutrient removal technologies within existing infrastructure and the benefits of providing the appropriate level of instrumentation & controls. We will also review the future regulatory landscape and a watershed approach to nutrients. Join us as we discuss practical implementation of innovative nutrient removal technologies to solve the challenges of today while positioning to meet the problems of the future.

MIDWEST STUDENT DESIGN COMPETITION (MSDC)

In parallel with the Seminar, you can support the University Students from CSWEA and surrounding states that will be presenting their environmental and wastewater design projects at the Monona Terrace. Please consider attending to learn about their contributions to the industry and support these budding professionals. Competition starts at 8:00 am on April 16th.

MEET & GREET/DINNER

A meet and greet will be held April 15th, 2026 where Seminar attendees, Seminar presenters, and Midwest Student Design participants can network. This event will be from 5:00 pm until 6:30 pm at the Monona Terrace.

There will be an Innovation and Technology (I&T) Networking dinner after the meet and greet at Great Dane Pub & Brewing (123 E Doty Street). If interested in attending please sign up when registering.

Monona Terrace

1 John Nolen Dr, Madison, WI 53703

The Great Dane Pub & Brewery

123 East Doty Street, Madison, WI 53703

31ST ANNUAL CSWEA EDUCATION SEMINAR **SPEAKERS**



Charles Bott, Ph.D., P.E.



Pusker Regmi, Ph.D., P.E.



Lee Pinkerton, P.E.



Tyler Briese, P.E.



Joe Watson



Cindy Qin, Ph.D.



Chan Lan Chun, Ph.D.



Silvia Secchi, Ph.D.



Craig Just, Ph.D., P.E.



31ST ANNUAL CSWEA EDUCATION SEMINAR

APRIL 16TH 2026

FROM SMALL PLANTS TO BIG CHALLENGES: NUTRIENT REMOVAL, CONTROLS, AND EVOLVING REGULATIONS

8:00-8:10 am: WELCOME AND INTRODUCTIONS

8:10-9:00 am: KEYNOTE 1: PRACTICAL STEPS TO INTEGRATING ADVANCED NUTRIENT REMOVAL

SPEAKER: **CHARLES BOTT, PH.D., P.E.**
HAMPTON ROADS SANITATION DISTRICT
CHIEF TECHNOLOGY OFFICER AND DIRECTOR
OF WATER TECHNOLOGY

Charles Bott's pioneering work at the Hampton Roads Sanitation District (HRSD) has advanced the practical integration of cutting-edge nutrient removal technologies into full-scale wastewater treatment operations. This keynote will highlight actionable strategies derived from HRSD's experience, including process intensification, mainstream partial denitrification-anammox (PdNA), and optimization of biological nutrient removal under varying dissolved oxygen conditions. Emphasis will be placed on bridging research and practice—translating microbial ecology insights, pilot-scale innovations, and regulatory drivers such as Chesapeake Bay TMDL compliance into scalable solutions that achieve stringent nitrogen and phosphorus limits while minimizing capital and operating costs. Attendees will gain a roadmap of practical steps for utilities seeking to implement advanced nutrient removal, informed by HRSD's leadership in technology deployment, collaborative research, and commitment to sustainable water quality improvements.

DETAILED BIO:

Dr. Charles B. Bott is the Chief Technology Officer and Director of Water Technology and Research at the Hampton Roads Sanitation District (HRSD), where he leads innovation across 18 wastewater treatment plants with a combined capacity of over 225 million gallons per day. His research has advanced biological nutrient removal, process intensification, and renewable energy recovery, bridging cutting edge science with full scale utility practice. Under his leadership, HRSD has received national recognition, including the U.S. Water Alliance's U.S. Water Prize (2018) and Virginia's Governor's Environmental Excellence Award (2019) for the Sustainable Water Initiative for Tomorrow (SWIFT) Research Center. Widely respected in the industry, Bott also serves as an adjunct professor at Virginia Tech and Old Dominion University, mentoring the next generation

of environmental engineers while shaping the future of sustainable water management.

9:00-9:30am: TIME TO SET BNR FREE: A FRAMEWORK FOR PROCESS INTENSIFICATION

SPEAKER: **PUSKER REGMI, PH.D., P.E.**
VICE PRESIDENT AND WASTEWATER
SECTOR LEADER AT STANTEC

Biological Nutrient Removal (BNR) has long relied on conventional design features such as Internal Mixed Liquor Recycle (IMLR), but these legacy approaches now constrain innovation and efficiency. In Time to Set BNR Free: A Framework for Process Intensification, Pusker Regmi will present a bold rethinking of BNR that emphasizes letting go of outdated assumptions and embracing streamlined, carbon-efficient strategies. Drawing on full-scale demonstrations and research into advanced aeration control, nitrite-shunt, and mainstream deammonification, this keynote will outline how utilities can intensify processes within existing infrastructure to achieve higher capacity, lower energy and chemical demand, and improved effluent quality. Attendees will gain a practical framework for reimagining BNR—one that leverages modern process control, microbial ecology, and resource recovery to meet stringent nutrient limits while positioning facilities for long-term sustainability.

DETAILED BIO:

Dr. Pusker Regmi is a Vice President and Wastewater Sector Leader at Stantec and a recognized leader in wastewater process innovation, known for advancing biological nutrient removal (BNR) and process intensification strategies that are reshaping utility operations worldwide. His work focuses on carbon-efficient nitrogen removal and the practical integration of process control strategies into full-scale treatment systems. In 2025, he received the Water Environment Federation's Camp Applied Research Award, one of the organization's highest honors for his contributions to process intensification in wastewater treatment. Through his work with utilities and academic collaborators, Dr. Regmi bridges research and practice, helping facilities unlock capacity, reduce energy and chemical demand, and meet increasingly

stringent nutrient regulations while mentoring the next generation of environmental engineers.

9:30-10:00 am: POSTER SESSION & BREAK

10:00-10:25 am: LESSONS LEARNED FROM IMPLEMENTING LOW DO AT A MID-SIZE FACILITY

SPEAKER: **LEE PINKERTON, P.E.**
ENGINEER IN RESEARCH AND
DEVELOPMENT DEPARTMENT OF THE
METROPOLITAN COUNCIL
ENVIRONMENTAL SERVICES

The Eagle's Point WRRF (Cottage Grove, MN) has been the site of a long-term, low dissolved oxygen (DO) demonstration at full-scale. The facility has two separate secondary treatment trains. One train operated under low DO conditions from May 2023 to present, and both trains operate under low DO as of August 2025. Under low DO, the facility has achieved excellent ammonia removal, while requiring 20% less air use over the past 2 years despite the fact the influent flow has increased 20% over the same period. Low DO is often associated with increases in SVI; we have been mitigating poor settleability and are navigating how to operate a robust and resilient low DO system at full-scale.

DETAILED BIO:

Lee Pinkerton is an engineer in the Research and Development department of the Metropolitan Council Environmental Services, where he has worked for 9 years. He works on a variety of special projects ranging from aeration, blowers, and process modeling to molecular biology. Lee earned a BS in Chemical Engineering from the University of Wisconsin-Madison, is a registered Professional Engineer in Minnesota, and is a member of the ASCE Oxygen Transfer Committee.

10:25-10:50 am: THE NEW WATER EXPERIENCE – SND AND LOW DO

SPEAKERS: **TYLER BRIESE, P.E.**
NEW WATER STAFF ENGINEER
JOE WATSON
NEW WATER PROCESS AND PROJECT SPECIALIST

For over a year, NEW Water has been evaluating full-scale process configurations at low dissolved oxygen (DO) concentrations in preparation for future aeration system upgrades. As part of this effort, NEW Water is demonstrating a full-scale transition from an anaerobic-oxic (AO) process to an anaerobic-



31ST ANNUAL CSWEA EDUCATION SEMINAR

APRIL 16TH
2026

FROM SMALL PLANTS TO BIG CHALLENGES: NUTRIENT REMOVAL, CONTROLS, AND EVOLVING REGULATIONS

anoxic-oxic (A2O) process configuration under low dissolved oxygen (DO) conditions. The study includes two full-scale parallel aeration basins, designated as test and control, each with its own secondary clarifier and effluent for independent performance evaluation. This study is among the few to use full-scale, side-by-side testing to evaluate low DO impacts and control strategies. The presentation will summarize operational performance data and key findings from this full-scale demonstration.

DETAILED BIO:

Tyler Biese, PE, is a Staff Engineer at NEW Water (Green Bay Metropolitan Sewerage District), where he manages major capital improvement projects from planning and design through construction and start-up. He also enjoys getting involved with process data analysis to assist operations at NEW Water. Tyler is a Professional Engineer licensed in Wisconsin and holds a Master of Science in Civil Engineering from Iowa State University.

Joe Watson is the Process & Project Specialist at NEW Water, where he has worked for more than ten years. In Joe's current role he focuses on process optimization and the success of NEW Waters capital upgrade projects. Joe's Prior experience includes seven years as a Wastewater Operator, Operating NEW Waters two facilities. Joe Watson has a BS in Water Resources from the University of Wisconsin-Stevens Point as well as an AS in Natural Resources from Fox Valley Technical College.

10:50-11:15 am: BALANCING CARBON, NUTRIENTS, ENERGY, AND DENSIFICATION FOR THE EGAN WRP

SPEAKER: CINDY QIN, PH. D.
SENIOR ENVIRONMENTAL RESEARCH SCIENTIST AT THE METROPOLITAN WATER RECLAMATION DISTRICT OF GREATER CHICAGO

The Metropolitan Water Reclamation District of Greater Chicago (MWRD) is undertaking a research project at the Egan Water Reclamation Plant (WRP) in partnership with the Water Research Foundation and national laboratories. The project focuses on a "Utility of the Future" model to optimize carbon management, energy production,

nutrient removal, and system densification for future challenges. It involves pilot testing of different treatment configurations to potentially increase renewable energy and improve energy efficiency. During this presentation you will learn about the preliminary findings of nutrient removal strategies with sustainable resource management in collaboration with improved energy efficiency.

DETAILED BIO:

Dr. Cindy Qin is the Senior Environmental Research Scientist at the Metropolitan Water Reclamation District of Greater Chicago, has worked on nutrient removal areas: side stream ammonia removal and Sidestream EBPR. Her works have focused on the operational optimization of EBPR at Stickney and Calumet WRP, Sequencing Batch Reactor (SBR) study of high strength organic material (HSOM) addition for EBPR process, full scale carbon addition study and S2EBPR study at Calumet WRP, DE-amMONification (DEMON) pilot study and Anita™Mox startup at Egan WRP, and HSOM screening protocol development.

11:15 – 11:45 AM: MORNING PANEL: WHAT IS THE SMARTEST INVESTMENT FOR NUTRIENT REMOVAL?

11:45-12:50 pm: LUNCH WITH POSTER SESSION

12:50-1:10 PM: RETHINKING SULFATE: CHALLENGES, IMPACTS, AND INTEGRATED SOLUTIONS
SPEAKER: CHAN LAN CHUN, PH.D.

UNIVERSITY OF MINNESOTA DULUTH

In freshwater ecosystems, dissolved sulfur species, most commonly sulfate, have increased globally, largely due to human activities and climate change-accelerated mineral oxidation. This rise in sulfate levels can significantly impact the biogeochemical cycles of other elements and lead to ecotoxicological consequences. There is substantial room for improvement in sulfur treatment and management, particularly in efficiently converting sulfur pollutants into valuable products. We have developed a suite of technologies tailored to different sulfate concentrations and wastewater types through interdisciplinary collaboration and partnerships. Our multi-pronged approach includes biological treatment coupled with sulfide immobilization for high sulfate levels; an in-situ electrode-integrated biofiltration system

as a semi-passive treatment option and barite precipitation method for low sulfate levels. Each technology was developed through a stepwise development process, from laboratory proof-of-concept to pilot-scale demonstration, emphasizing the importance of iterative development and integration approach. Collectively, these efforts provide a flexible treatment train framework for addressing sulfate pollution and generating beneficial products. The resulting technologies offer practical solutions for Minnesota and other regions facing similar sulfur management challenges.

DETAILED BIO:

Dr. Chan Lan Chun is a Professor in the Department of Civil and Environment Engineering at the University of Minnesota Duluth and a Principal Research Engineer at Natural Resources Research Institute at the University of Minnesota. She earned her Ph.D. in Environmental Engineering from the University of Minnesota Twin Cities to study the fate of organic contaminants in contaminated soils and drinking water distribution systems. Dr. Chun's research integrates fundamental themes in aquatic chemistry and environmental microbiology with a focus on developing solutions for increasingly complex and costly environmental challenges. Her research group is dedicated to bridging the gap from fundamental research to application in collaboration across disciplines and with diverse groups.

1:10 – 1:30 PM: NITROGEN REMOVAL CONSIDERATIONS IN THE UPPER MISSISSIPPI RIVER BASIN WATERSHED

SPEAKER: SILVIA SECCHI, PH.D.
PROFESSOR IN THE SCHOOL OF EARTH, ENVIRONMENT AND SUSTAINABILITY AT THE UNIVERSITY OF IOWA

The biggest challenge to water quality in the Upper Mississippi River Basin (UMRB) is agriculture. The evidence strongly suggests that the cheapest nitrogen removal strategy in the region is avoiding excessive fertilizer use, appropriately applying manure, and promoting crop rotations. This approach would also require adequate monitoring and enforcement of regulations. It has now been 15 years since the federal Environmental Protection Agency (EPA) decided to use a cooperative federalist approach and rely on voluntary measures to address nutrients in the basin. Since then, the UMRB has seen a 66% increase in Confined Animal Feeding Operations



31ST ANNUAL CSWEA EDUCATION SEMINAR

APRIL 16TH 2026

FROM SMALL PLANTS TO BIG CHALLENGES: NUTRIENT REMOVAL, CONTROLS, AND EVOLVING REGULATIONS

(CAFOs), which have been largely ignored by the states' Nutrient Reduction Strategies. Though CAFOs are technically point sources under the Clean Water Act (CWA), their oversight is severely limited because of the CWA's agricultural stormwater exemption, several court decisions, and poor monitoring and enforcement of the CWA. At the same time that CAFOs have increased in the UMRB, so has the corn acreage and associated fertilizer applications, driven in part by the ethanol mandate. Climate change is also causing more nutrient losses and therefore higher fertilizer application rates. Despite many efforts to increase the adoption of voluntary practices, they are not keeping up with the increases in nutrients. The current administration is unlikely to consider the disproportionate costs that the current situation imposes on non-agricultural point sources and its burden on taxpayers, but states and local governments can and should take the role of agriculture into consideration in their regulatory and water quality management efforts.

DETAILED BIO:

Dr. Silvia Secchi is a professor in the School of Earth, Environment and Sustainability at the University of Iowa. She holds a Ph.D. in economics from Iowa State University. Her work focuses on the interface between agriculture and the environment, particularly water quality and Green House Gas emissions, and the role of policy in addressing environmental impacts of crop and livestock production in industrialized systems. Her geographical research focus area is the Corn Belt. She has published on the impacts of biofuel policies on land use and water, the evolution of farm bill conservation provisions, farmers' attitudes towards conservation, multifunctional floodplain management and targeted reconnection, invasive species management, and mitigation and adaptation to climate change in the agricultural sector.

1:30-1:50 PM: THE IOWA WASTEWATER AND WASTE TO ENERGY RESEARCH PROGRAM

SPEAKER: CRAIG JUST, PH.D., P.E.

DONALD E BENTLY PROFESSOR IN
ENGINEERING AT THE UNIVERSITY OF IOWA

The Iowa Wastewater and Waste-to-Energy Research Program (IWVERP) is a collaborative initiative focused on advancing sustainable wastewater treatment, resource recovery, and renewable energy production across Iowa and

the Midwest. Centered at full-scale wastewater resource recovery facilities - in small towns, cities, and agricultural settings - the program integrates academic research, utility operations, industry partners, and workforce development to accelerate deployment of innovative technologies. Core research areas include anaerobic digestion optimization, nutrient recovery, algae-based treatment systems, advanced monitoring and controls, and the conversion of wastewater-derived resources into renewable fuels and bioproducts. IWVERP also serves as a living laboratory for students, operators, and engineers, providing hands-on training and demonstration at operational facilities. By linking fundamental research with real-world implementation, the program reduces technical risk, improves system performance, and supports Iowa's goals for energy independence, environmental protection, and resilient water infrastructure.

DETAILED BIO:

Dr. Craig Just is the Donald E. Bently Professor in Engineering. Dr. Just has over 30 years of experience leading fundamental and applied environmental engineering research with expertise in wastewater treatment, analytical chemistry, microbiology, sensors for control of complex systems, anaerobic digestion, and algal biofilms. Dr. Just has over 50 peer-reviewed publications, was PI or co-PI on over \$120M in funded research, is an AAAS Leshner Fellow, and has received the Excellence in Teaching Sustainability Award, International Studies Outstanding Faculty Mentor Award, David J. Skorton Award for Staff Excellence in Public Service, College of Engineering Staff Research and Faculty Service Awards, and the University of Iowa President and Provost Award for Teaching Excellence.

1:50-2:10 pm: PANEL: HOW DO WE PLAN FOR TOMORROW WHILE RESPONDING TO TODAY?

2:10-2:30 pm: AFTERNOON BREAK / POSTERS

2:30-3:15 PM: KEY NOTE 2: SIZING INSTRUMENTATION AND CONTROLS FOR YOUR FACILITY

SPEAKER: CHARLES BOTT, PH.D., P.E.

HAMPTON ROADS SANITATION DISTRICT CHIEF
TECHNOLOGY OFFICER AND DIRECTOR OF WATER

Sizing Instrumentation and Controls for Your Facility will explore how utilities can strategically align

instrumentation and process control systems with their facility's scale, complexity, and treatment objectives. Drawing on Hampton Roads Sanitation District's (HRSD) extensive experience, Charles Bott will highlight lessons learned in balancing advanced monitoring technologies with practical operational needs, ensuring that investments in sensors, automation, and data analytics deliver measurable improvements in nutrient removal, energy efficiency, and reliability. The keynote will emphasize frameworks for evaluating instrumentation requirements, avoiding over- or under-engineering, and integrating controls in a way that supports both regulatory compliance and long-term sustainability and digital water initiatives. Attendees will gain practical guidance on tailoring instrumentation and controls to their facility's unique context, informed by HRSD's leadership in innovation and full-scale implementation.

3:15-3:45 pm: HOW MUCH INSTRUMENTATION IS ENOUGH?

SPEAKER: PUSKER REGMI, PH.D., P.E.
VICE PRESIDENT AND WASTEWATER
SECTOR LEADER AT STANTEC

As wastewater facilities adopt increasingly sophisticated control strategies, instrumentation is often added with the assumption that more data will automatically lead to better outcomes. This presentation will challenge that assumption by examining how sensing density, process understanding, and control intent must be aligned to improve operational performance. Drawing on applied research and lessons learned from advanced nutrient removal and process intensification efforts, the discussion will show how instrumentation can either enable or unintentionally hinder effective process control. These concepts presented will connect to broader operational objectives such as carbon-efficient nitrogen removal, simplified process configurations, and staff capability. Attendees will gain a practical framework for evaluating process control and instrumentation strategies, helping utilities invest deliberately in sensing approaches that improve performance, reduce lifecycle costs, and reinforce sustainable, operator-centric facility operation.

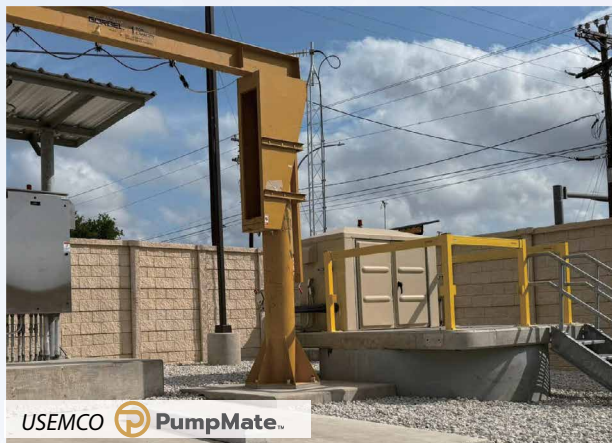
3:45-4:10 pm: CLOSING PANEL: HOW MUCH CAN INSTRUMENTATION AND CONTROLS REALLY DO FOR US?

PRE-ENGINEERED SOLUTIONS

FROM FABRICATION TO FACTORY TESTING — HANDLED ALL IN-HOUSE.

USEMCO manufactures packaged water, wastewater, & control systems built for real-world demands. Our brands, PumpMate & AquaPak deliver field-proven solutions that streamline your project. Supply the specs — we'll design & deliver a turnkey system built to perform the way you need it.

PUMP STATIONS | WATER BOOSTERS | CONTROL SYSTEMS



3



Local Representation:

Northern Illinois
Flow-Technics
815.277.2600
flowtechnics.com

Wisconsin
L.W. Allen LLC
608.222.8622
lwallen.com

Minnesota
Minnesota Pump Works
507.645.8004
minnesotapumpworks.com

Illinois
Cogent - Vandevanter
636.343.8880
cogentcompanies.com

You don't hire engineers who are "good enough."
You hire the very best.

Incidentally, so do we.



There is no B-Team.

ApexEngGroup.com



Cost Effective Algae Control

Durable Stainless Steel Construction



- ▶ Full access when open between baffle and weir
- ▶ Exclusive hinge system locks covers open with no tethers, cables or struts
- ▶ Light weight, safe, reliable and effective
- ▶ Lower your labor costs with a cleaner solution

Continuously inhibit
algae growth and
reduce post clarifier
treatment issues



Contact us to get your quote started today
23062 Hwy.34 • Barnesville, MN 56514
Phone 218-493-4470 • Fax 218-493-4441
janssenmachine@rrt.net • janssenmachine.com



99TH ANNUAL MEETING

MAY 19-21, 2026 | RIVERCENTRE – ST. PAUL, MN

Flowing Together:
Connecting the Water Workforce



Central States Water Environment Association

1021 Alexandra Blvd, Crystal Lake, IL 60014

855-692-7932 • www.cswea.org • ahaque@cswea.org

SAINT PAUL
RIVERCENTRE

Welcome to the 99TH ANNUAL MEETING



Timothy Wedin
CSWEA President
2025-2026

The Local Arrangements Committee (LAC) is excited to bring you the 99th Annual Meeting to be held at the Saint Paul RiverCentre in downtown St. Paul, Minnesota. Three days of events have been organized between May 19th and May 21st. This year's theme is Flowing Together: Connecting the Water Workforce, which highlights one of our strategic initiatives.

The Annual Meeting will again include many opportunities to network with other industry leaders. These opportunities include participating in a service project, donating to the silent auction to support the GWS program and their mission to provide clean water for all, learning what others are doing to support their workforce within their organizations, getting to know our emerging leaders better, learning about a new process or product, acting as a mentor, gaining a mentor...there are endless opportunities throughout the three day event for action. The ultimate opportunity is networking. One conversation can spark an idea that could have tremendous impacts.

The Technical Program Committee received over 130 abstracts and the best of the best were chosen to be part of the program. There will also be other tracks focusing on Ethics, Resource Recovery, Stormwater and an Operators Training track.

The meeting is scheduled to begin on Tuesday, May 19th and will continue through Thursday, May 21st. There will be two conference hotels: the historic Saint Paul Hotel or the Hampton Inn & Suites – Downtown St. Paul. Both are within a block of the Saint Paul RiverCentre and located near many great restaurants, the Science Museum, beautiful parks, the Mississippi River and so much more. We received great rates for both locations. Be sure to book early.

Be sure to check out the details within this Registration Brochure for all the fun and exciting opportunities to pick from. On Tuesday, there will be a tour of the Seneca Water Resource Recovery Facility, a service project in the St Paul area that includes stenciling of storm drains, a Stormwater tour in the Woodbury and Oakdale area, and so much more. The Meet & Greet/Social event will be held outdoors, weather permitting, at RiverCentre's outdoor pavilion area. There will be a plan B location within RiverCentre if the weather decides not to cooperate with us.

Wednesday and Thursday will be filled with the opportunity to attend the high-quality technical program and explore the exhibitor hall. There will be a keynote address by Racquel Vaske, General Manager of Saint Paul Regional Water Services (SPRWS) on Wednesday morning at 8am. Racquel focuses on employee engagement and development while also working to collaborate with communities and others in the water industry. This approach of strengthening the water workforce is applied in management of a utility that supplies, treats, and distributes high-quality drinking water to over 450,000 customers across 14 cities.

The Awards Banquet will be held on Wednesday evening at the Landmark Center, approximately 1 block away from the RiverCentre. Join us as we recognize the amazing organizations and individuals who go above and beyond in our industry. Be sure to come for the pre- and post- reception. Last year we had record breaking attendance at the Banquet event, and we are hoping to see even more at this year's event.

The LAC are so excited to bring you an incredible event that you will not want to miss! A special thank you to our LAC Chair, Quentin Hahn, the technical program committee, and the rest of the committee for their endless amount of work they have put into making this event a success.

Looking forward to seeing you all there!

“ *The Annual Meeting will again include many opportunities to network with other industry leaders. The ultimate opportunity is networking. One conversation can spark an idea that could have tremendous impacts.*

Conference at a Glance

| TUESDAY, MAY 19 | ACTIVITY | LOCATION | ADDRESS |
|-------------------|--|--|---|
| 10:00 AM-12:00 PM | YP Service Project Storm Drain Stenciling | Storm Drain Stenciling | - |
| 10:30 AM-3:30 PM | Golf Outing | Como Park Golf Course | 1431 Lexington Pkwy N, St Paul, MN 55103 |
| 1:00 PM-5:00 PM | Stormwater Tour Pumps, Parks & Plants | Woodbury & Oakdale | - |
| 1:00 PM-3:00 PM | Plant Tour MCES Seneca Facility | Seneca Wastewater Treatment Plant | 3750 Plant Rd, Eagan, MN 55122 |
| 1:30 PM - 6:00 PM | CSWEA YP Summit | Hampton Inn & Suites St. Paul | 200 7th St W, St Paul, MN 55102 |
| 6:30 PM-10:00 PM | Social Meet & Greet Bags (Cornhole) Tournament | Saint Paul RiverCentre Huepenbecker Plaza | - |

| WEDNESDAY, MAY 20 | ACTIVITY | LOCATION | ROOM |
|-------------------|--|---|------------------------|
| 6:30 AM-7:45 AM | Jim Shaw Memorial 5k Run/Walk | Start in Front of Science Museum of Minnesota Mississippi River Path | - |
| 8:00 AM-8:55 AM | Opening Session & Keynote | Saint Paul RiverCentre | Ballroom E-F |
| 9:00 AM-6:00 PM | Exhibits | Saint Paul RiverCentre | Ballroom A-D/Concourse |
| 9:00 AM-10:00 AM | Technical Sessions | Saint Paul RiverCentre | Meeting Rooms 2-6 |
| 10:00 AM-11:00 AM | Exhibits Only/Morning Break/Poster Session 1 | Saint Paul RiverCentre | Ballroom A-D/Concourse |
| 11:00 AM-12:00 PM | Technical Sessions | Saint Paul RiverCentre | Meeting Rooms 2-6 |
| 12:00 PM-1:00 PM | Exhibitor Lunch | Saint Paul RiverCentre | Ballroom A-D/Concourse |
| 1:00 PM-2:00 PM | Technical Sessions | Saint Paul RiverCentre | Meeting Rooms 2-6 |
| 2:00 PM-2:30 PM | Afternoon Break/Poster Sessions 2 | Saint Paul RiverCentre | Ballroom A-D/Concourse |
| 2:30 PM-3:30 PM | Technical Sessions | Saint Paul RiverCentre | Meeting Rooms 2-6 |
| 3:30 PM-6:00 PM | Exhibitor Reception | Saint Paul RiverCentre | Ballroom A-D/Concourse |
| 4:00 PM-4:15 PM | 7S Meeting | Saint Paul RiverCentre | Meeting Room 2 |
| 4:15 PM-4:30 PM | Golden Manhole Society | Saint Paul RiverCentre | Meeting Room 2 |
| 4:30 PM-5:30 PM | YP and New Member Meeting | Saint Paul RiverCentre | Meeting Room 4 |
| 6:30 PM-7:00 PM | Pre-Awards Reception | Landmark Center | Musser Cortile |
| 7:00 PM-9:00 PM | Annual CSWEA Awards Banquet | Landmark Center | Musser Cortile |
| 9:00 PM-10:00 PM | Post Awards Celebration & Networking Event | Landmark Center | Musser Cortile |

| THURSDAY, MAY 21 | ACTIVITY | LOCATION | ROOM |
|-------------------|--|------------------------|------------------------|
| 7:00 AM-8:00 AM | State Section Meeting | Saint Paul RiverCentre | Meeting Rooms 10-12 |
| 8:00 AM-8:45 AM | Annual Business Meeting | Saint Paul RiverCentre | Meeting Rooms 10-12 |
| 9:00 AM-10:00 AM | Technical Sessions | Saint Paul RiverCentre | Meeting Rooms 3-8 |
| 9:00 AM-12:00 PM | Exhibits | Saint Paul RiverCentre | Ballroom A-D/Concourse |
| 10:00 AM-11:00 AM | Poster Sessions 2, Morning Break | Saint Paul RiverCentre | Ballroom A-D/Concourse |
| 11:00 AM-12:00 PM | Technical Sessions | Saint Paul RiverCentre | Meeting Rooms 3-8 |
| Ends 11:30 AM | Silent Auction Bids Due | Saint Paul RiverCentre | Exhibitor Concourse |
| 12:00 PM-1:00 PM | Association Luncheon | Saint Paul RiverCentre | Meeting Rooms 10-12 |
| 1:00 PM-3:00 PM | Technical Sessions / Ethics / Ops Training | Saint Paul RiverCentre | Meeting Rooms 4-8 |

| REGISTRATION HOURS | DATE | LOCATION |
|--------------------|---------------------|--|
| 5:30 PM-9:00 PM | Tuesday, May 19th | Saint Paul RiverCentre - Social Event - Huepenbecker Plaza |
| 8:00 AM-5:00 PM | Wednesday, May 20th | Saint Paul RiverCentre |
| 8:00 AM-3:00 PM | Thursday, May 21st | Saint Paul RiverCentre |

| EXHIBIT HALL | DATE | LOCATION |
|------------------|---------------------|-------------------|
| 9:00 AM-6:00 PM | Wednesday, May 20th | Exhibit Hall Open |
| 9:00 AM-12:00 PM | Thursday, May 21st | Exhibit Hall Open |

Local Arrangements Committee


| Name | Organization | Role | Email |
|-----------------|--|--|--|
| Tim Wedin | Metropolitan Council Environmental Services | 2025-2026 CSWEA President | timothy.wedin@metc.state.mn.us |
| Quentin Hahn | Burns & McDonnell | 2026 Local Arrangements Committee Chair | qahahn@burnsmcd.com |
| Will Martin | Hazen & Sawyer | 5k Run/Walk | wmartin@hazenandsawyer.com |
| Michelle Carter | HDR | Audio/Visual Chair | michelle.carter@hdrinc.com |
| Isabel Reams | Hazen & Sawyer | Catering Chair | ireams@hazenandsawyer.com |
| Michael Quamme | Apex Engineering Group | Exhibits Chair | michael.quamme@apexenggroup.com |
| Carley Johnson | ISG | Golf Outing Chair | carley.johnson@isginc.com |
| Niko Deshpande | Black & Veatch | Local Tour Chair | deshpenden1@bv.com |
| Kai Peterson | Metropolitan Council Environmental Services | Local Tour | kai.peterson@metc.state.mn.us |
| George Sprouse | Metropolitan Council Environmental Services | Local Tour | george.sprouse@metc.state.mn.us |
| Anna Munson | Hazen & Sawyer | Registration | amunson@hazenandsawyer.com |
| Kyle Sandberg | HR Green | Registration | ksandberg@hrgreen.com |
| Jackie Strait | HR Green | Silent Auction Chair | jstrait@hrgreen.com |
| Anna Munson | Hazen & Sawyer | Speaker Search Chair | amunson@hazenandsawyer.com |
| Tim Korby | SEH | Sponsorships Chair | tkorby@sehinc.com |
| Andrew Toay | SRF | Stormwater Tour Chair | atoay@srfconsulting.com |
| Bridget Osborn | HR Green | Stormwater Tour | bosborn@hrgreen.com |
| Kaitlyn Hague | HDR | Student Design & YP Chair, YP Service Project | kaitlyn.hague@hdrinc.com |
| Al Robertsen | AE2S | Student Design & YP Chair, YP Service Project | alexander.robertsen@ae2s.com |
| Tracy Ekola | Brown & Caldwell | Utility Coordinator | tekola@brwncald.com |
| Shanna Czeck | City of St. Cloud | Technical Committee Chair | shanna.czeck@ci.stcloud.mn.us |
| Ethan Redlin | Burns & McDonnell | Social Event Chair | ejredlin@burnsmcd.com |
| Tatiana Vasquez | Apex Engineering Group | Social Event Chair | tatiana.vasquez@apexenggroup.com |

Technical Program Committee

| Name | Organization | Role | Email |
|------------------|------------------------------------|-----------------------|--|
| Shanna Czeck | City of St. Cloud | Chair (MN) | shanna.czeck@ci.stcloud.mn.us |
| Colin Fitzgerald | Jacobs | Committee Member (MN) | colin.fitzgerald@jacobs.com |
| Brad Bennett | Urbana-Champaign Sanitary District | Committee Member (IL) | bbennett@u-csd.com |
| Chris Buckley | Jacobs | Committee Member (IL) | chris.buckley@jacobs.com |
| Carly Amstadt | Madison MSD | Committee Member (WI) | carlya@madsewer.org |
| Steve Graziano | Jacobs | Committee Member (WI) | steven.graziano@jacobs.com |


Executive Committee

- President, Tim Wedin
- 1st Vice President, Rich Hussey
- 2nd Vice President, Mary-Frances Kilmek
- Treasurer, Alan Grooms
- Immediate Past President, Troy Larson
- WEF Delegate - '23-'26, Anna Munson
- WEF Delegate - '25-'28, Autumn Fisher
- PWO Representative - '25-'27, Eric Lynne
- YP Representative - '24-'26, Rahim Ansari
- MN Section Trustee - '24-'26, Jackie Strait
- IL Section Trustee - '25-'27, James Kerrigan
- WI Section Trustee - '25-'27, Dave Diehl
- Executive Management, Amy Haque & Mohammed Haque




Need Your Tanks Quick?

FIND YOUR TANK AT
ASSMANN-USA.COM OR
 CALL **888-357-3181**



ClarkDietz
 Engineering Quality of Life®



**integrated
 WATER QUALITY
 SOLUTIONS**

WATER | WASTEWATER | STORMWATER
 Illinois | Indiana | Kentucky | Michigan | Wisconsin
www.clarkdietz.com




Design with a purpose.

Don't get lost in the shuffle. At MSA, you're an owner. And you have access to valuable mentorship and growth opportunities to fuel your professional development. Locations in **Wisconsin, Minnesota, Illinois** and **Iowa**.

msa-ps.com

**100%
 Employee Owned.**

Conference Highlights

Tuesday, May 19

GOLF OUTING

Como Park Golf Course | 10:30 AM – 3:30 PM
1431 Lexington Pkwy N., St. Paul, MN 55103



Nestled next to Lake Como and Como Park Zoo & Conservatory, Como Park Golf Course is a sporty 18-hole championship golf course with rolling hills and challenging well-bunkered greens. The thoughtful course design combines challenging play with scenic beauty and is great for all skill levels. The unique clubhouse offers stunning views of the course and north Lake Como. For corporate sponsorship opportunities or for outing details, contact Carley Johnson at carley.johnson@isginc.com.

STORMWATER TOUR | PUMPS, PARKS & PLANTS

Woodbury & Oakdale | 1-5 PM

Meet at the RiverCentre at 12:45pm.

Bus transportation is included in the tour sign-up



This tour will explore how stormwater treatment fits into the natural placemaking spaces of Woodbury and Oakdale. We will be visiting the Wilmes Lake Alum Treatment Facility nestled between Wilmes Lake and Woodbury's Kargel Park. This facility pumps water from the lake's northern influent channel to an alum dosing facility. Aluminum Phosphate is mixed in and directed to a settling basin before discharging back into the lake. The site contains environmentally friendly design features, native restoration and public art. Another stop will be Woodbury's 61-acre Hasenbank Park. This park was designed to protect Fish Lake's water quality, support native habitat, and help visitors learn about stormwater management. Water is pumped from Fish Lake through a stone spillway, and from there, it moves through three vegetated basins and additional spillways. The park also features trails, art installations and a young oak savanna restoration. The Oakdale Library has some OG stormwater treatment that we will check out upstream of Armstrong Lake. When installed 10-years ago, the green infrastructure elements and turf conversions to native, low-maintenance landscaping were new, novel options to treat stormwater and enhance the appearance of the site. We will check them out and see what made them a success for so long.

PLANT TOUR | MCES SENECA FACILITY

Seneca Wastewater Treatment Plant | 1:00 – 3:00 PM
3750 Plant Rd, Eagan, MN 55122

Transportation is not provided. Attendees will need to drive or carpool.



Seneca is the Metropolitan Council's third largest wastewater resource recovery facility and the fourth-largest facility in Minnesota. It was built in 1972, and a 1992 expansion increased the facility treatment capacity from 24 to 34 million gallons per day. The facility provides primary and secondary treatment to wastewater before discharging the resulting clean water to the Minnesota River. Dewatering and incineration are the methods used for disposal of the solids removed during wastewater treatment, and the resulting incinerator ash is landfilled in Rosemount. The tour will provide a wide-range overview of the Seneca facility, specific stops at highlights and unique features of the facility, and an opportunity to discuss relevant topics with staff involved in its operation, optimization, and planning.

YP SERVICE PROJECT | STORM DRAIN STENCILING

Hampton Inn & Suites St. Paul Lobby | 10:00 AM – 12:00 PM
200 7th St W, St Paul, MN 55102

Please join us Tuesday morning to work with the Friends of the Mississippi River to stencil and clean storm drains in the Saint Paul area. We will walk throughout the city using paint and stencils to mark storm drains with the message, "Keep 'em Clean, Drains to River (Lake or Creek)!". We will also pick up trash, clean storm drains, and distribute educational door-hangers to surrounding homes and businesses. This is an important way to make sure the local storm drains are clean, and to raise awareness in the community that their storm drains empty into the river. Tasks such as this one can help reduce the amount of runoff pollutants that enter the river through storm drains.



Materials and tools will be provided. Be sure to wear close-toe shoes and clothing appropriate for outdoor work. Bring a reusable water bottle and sunscreen. For more information about this year's project, contact Kaitlyn Hague at kaitlyn.hague@hdrinc.com

Conference Highlights

Tuesday, May 19

CSWEA YP SUMMIT

Hampton Inn by Hilton - St. Paul Downtown (adjacent to RiverCentre) | 1:30PM - 6:00PM

The CSWEA YP Summit serves to bring young professionals and students from across CSWEA together to learn from each other, develop their technical and professional skills, and grow into future leaders and stewards of the water/wastewater industry and environment. Come join us on Tuesday afternoon and learn how to troubleshoot wastewater treatment processes, navigate a construction project, and build your career with the help of a mentor in engaging and interactive sessions. Register for the YP Summit as part of your Annual Meeting registration. Students and Young Professionals (≤ 10 years of experience in water/wastewater industry) are welcome.

Schedule:

Held during the first day of the CSWEA Annual Meeting, before the service project, WWTF tour, and stormwater tour so that YPs don't have to miss out on these events.

- 1:30PM - 2:00PM YP Summit Lunch
- 2:00PM - 2:15PM YP Summit Start and Introductions
- 2:15PM - 2:45PM Session 1: Navigating Construction
- 2:45PM - 4:00PM Session 2: Troubleshooting WWTFs
- 4:00PM - 4:15PM Snacks/Break
- 4:15PM - 5:45PM Session 3: Career Navigation and Mentorship
- 5:45PM - 6:00PM Closing Remarks



Session 1 (30 minutes)

Navigating Construction

Rahim Ansari, Jacobs

This session offers a practical look at how to successfully manage construction activities at wastewater facilities. We will walk through common challenges, from coordinating contractors to maintaining temporary operations that keep plants running smoothly during upgrades. Attendees will learn strategies for minimizing disruptions, improving communication, and anticipating issues before they arise. Whether you've never stepped onto a construction site or want to sharpen your project delivery skills, this session provides a grounded, real-world overview.

Session 2 (75 minutes)

Troubleshooting WWTFs Using Software

Emma Forthaus, MSA Professional Services

Al Robertsen, AE2S

Dive into the world of wastewater treatment troubleshooting using process-simulation software. This session will demonstrate how to diagnose operational problems, test potential solutions, and optimize treatment performance without risking real-world upsets. Participants will explore case examples that highlight common process failures and how modeling can guide effective interventions. It's an ideal opportunity for YPs and students to build confidence in interpreting plant data and making informed operational decisions.

Session 3 (90 minutes)

Career Navigation/Advocating for Yourself

Nicholas Domalewski, Baxter & Woodman

Nicole Heyniger, Carollo

Jonessa Ruhl, Strand Associates

This interactive session focuses on helping young professionals and students chart a meaningful and rewarding career path in the water sector. A brief presentation will cover strategies for identifying your goals, building your network, and positioning yourself for future opportunities. Afterward, attendees will participate in a fast-paced "speed mentoring" activity, connecting with experienced professionals from across CSWEA. It's a chance to ask candid questions, gain insight from multiple perspectives, and build relationships that can support your growth for years to come.

SOCIAL MEET & GREET | BAGS (CORNHOLE) TOURNAMENT

St. Paul RiverCentre Huepenbecker Plaza | 6:30 - 10:00 PM

Kickoff the Annual Meeting with a fun, outdoor social gathering to network with your fellow water quality professionals at the outdoor space behind the St. Paul RiverCentre. Arrive to the back entrance by going through Rice Park, or enter through the conference hall by taking the exit doors nearest the downstairs cafe. Registration will be set up at the entrance - remember to get your drink tickets that will be included with your registration badge and come hungry! Plenty of food options await. We look forward to seeing you, whenever you can make it.



Conference Highlights

Wednesday, May 20

JIM SHAW MEMORIAL 5K RUN/WALK

Starting Location: Science Museum of Minnesota-located just across the street from the RiverCentre

120 W Kellogg Blvd., St. Paul, MN | 6:30 - 7:45 AM

Participants are asked to meet at the top of the steps at the Science Museum (across the street south of the RiverCentre) for a 6:30 am start. Course details will be provided at registration and via email. The course will be an out-and-back in beautiful Saint Paul along the Mississippi River multi-use path. Enjoy the walk/run route with your friends and fellow water professionals, before the conference begins for the day.

OPENING SESSION & KEYNOTE

Ballroom E-F – 8:00 – 8:55 AM

We are thrilled to welcome Racquel Vaske, General Manager of Saint Paul Regional Water Services (SPRWS), as the keynote speaker this year. Racquel focuses on employee engagement and development while also working to collaborate with communities and others in the water industry. This approach of strengthening the water workforce is applied in management of a utility that supplies, treats, and distributes high-quality drinking water to over 450,000 customers across 14 cities.



It is hard to imagine a presentation topic more thoroughly aligned with our conference theme; Flowing Together: Connecting the Water Workforce.

TECHNICAL SESSIONS

Meeting Rooms 2-6 | 9:00 AM – 12:00 PM, 1:00 PM – 3:30 PM

Technical sessions will be presented in five concurrent sessions on Thursday. Most sessions will last 30 minutes. For more information, please reference the Technical Program.

Sessions A, B, C, D and E will be from 9:00am to 12:00pm, with a one-hour break at 10:00am. Sessions F, G, H, I, and J will be from 1:00pm to 3:30pm, with a half hour break at 2:00pm.

EXHIBITS

Ballroom A-D/Concourse | 9:00 AM – 6:00 PM

Exhibits showcasing the latest technology in wastewater, collection systems, treatment and many related items will be on display. Be sure to visit our fine exhibitors and thank them for their support of our association.

EXHIBITOR LUNCH

Ballroom A-D | 12:00 - 1:00 PM

The Exhibitor Lunch offers exhibitors and conference attendees the chance to meet in a relaxing and social environment. Visit the RiverCentre Ballroom A-D to socialize with exhibitors and conference go-ers.

POSTER SESSIONS

Ballroom A-D/Concourse | 10:00 – 11:00 AM, 2:00 – 2:30 PM

Posters will be on display in the Exhibit Hall twice on Wednesday. Presenters will be available at their posters during these times to discuss their material and answer questions. Please stop by and visit to learn more.

EXHIBITOR RECEPTION

Ballroom A-D/Concourse | 3:30 – 6:00 PM

Light snacks and refreshments will be provided in the ballroom. Share some refreshments, visit with our exhibitors, and thank them for attending this year's Annual Meeting. Drink ticket(s) provided in your name tag. Be sure to bring them.

CSWEA ANNUAL AWARDS EVENT

Landmark Center | 6:30 – 9:00 PM

NOTE: New location this year! Make your way over to the nearby (4 min walk) Landmark Center to enjoy this event.

6:30 to 7:00 pm – Awards Reception

Connect with friends and enjoy refreshments before the Awards Banquet.

7:00 to 9:00 pm – Awards Presentations

Hear updates about CSWEA activities from the outgoing president, the vision for the year ahead from our incoming president and honor this year's award winners for the many WEF and CSWEA Awards presented to the very best of our industry.

The Annual CSWEA Awards Event is a ticketed event and includes a meal.

Please remember to purchase a ticket and bring the ticket to the event.



What happens **NEXT** is happening **NOW**.™

Let's shape your **NOW** together.



You're facing challenges with lasting implications. We're delivering world class solutions with lasting results. Tomorrow's reality is unfolding today, and our forward-thinking approach will keep you one step ahead.



cdmsmith.com/NEXTisNOW

**CDM
Smith**®



Reliable Biogas Conditioning and Upgrading Systems

- Custom Engineered Solutions
- Designed for Maximum Uptime and Efficiently
- Factory Tested, Quick Installation
- Unmatched Service and Support
- Trusted by 100s of Municipal Facilities

Built in the Midwest. Backed by experience. Ready to perform.

Let's talk about your next biogas project.

IQS INTEGRITY
QUALITY
SERVICE
EMPLOYEE OWNED - CUSTOMER DRIVEN

UNISON
— Employee Owned —

Unison Solutions
5451 Chavenelle Road,
Dubuque, IA | 563.585.0967
sales@unisonsolutions.com
www.unisonsolutions.com

JDV LEVEL LODOR™

Safe Even Distribution

Represented by:

MNX inc.

mnxinc.net

www.jdvequipment.com

**Plus
Odor control**

JDV
Equipment Corporation

Conference Highlights

Thursday, May 21

STATE SECTION BREAKFASTS & MEETINGS

Meeting Rooms 10-12 | 7:00 – 8:00 AM

Please attend your respective State Section's breakfast and business meetings to be updated on the activities of the section and its committees. Don't miss this opportunity to get involved and find out where you can help your section. This is a ticketed event and includes a meal. Please remember to purchase and bring your ticket with you!

SILENT AUCTION

Exhibit Hall

Global Water Stewardship (GWS) is dedicated to addressing sanitation challenges in developing countries by educating communities and creating sustainable solutions to protect waterways and promote public health. GWS operates entirely through volunteer efforts and relies on donor support. CSWEA recognizes the critical impact of GWS' work and contributes to its mission through proceeds from the Silent Auction held at the Annual Meeting.

Exhibitor's auction item donations, benefiting GWS, will be showcased in the Exhibit Hall. Join this vital social and humanitarian initiative by contributing auction items or placing bids to support clean water solutions worldwide.

Contact Jackie Strait (jstrait@hrgreen.com) and Kyle Sandberg (ksandberg@hrgreen.com) for more information. Bids will be posted at 11:30 am in the registration area.



CSWEA ANNUAL BUSINESS MEETING

Meeting Rooms 10-12 | 8:00 – 9:00 AM

The Association Business Meeting will include reports from the Association Committees and Sections and the annual election of officers. We encourage everyone to attend and learn about our association's activities.

EXHIBITS

Ballroom A-D/Concourse | 9:00 AM – 12:00 PM

Exhibits showcasing the latest technology in wastewater, collection systems, treatment and many related items will be on display. Be sure to visit our fine exhibitors and thank them for their support of our association.

TECHNICAL SESSIONS

Rooms 3-8 | 9:00 AM – 12:00 PM, 1:00 – 3:00 PM

Technical sessions will be presented in five concurrent sessions on Thursday morning and four concurrent tracks on Thursday afternoon. Most sessions will last 30 minutes. For more information, please reference the Technical Program.

Sessions K, L, M, N and O will be from 9:00am to 12:00pm, with a one-hour break at 10:00am. Sessions P, Q, R, and S will be from 1:00pm to 3:00pm, with no break.

ANNUAL CSWEA ASSOCIATION MEETING & LUNCHEON

Meeting Room 10-12 | 12:00 PM - 1:00 PM

Hear from our President and WEF Visitor as they present a summary of activities and initiatives of the organizations. We will recognize our Operations Challenge teams for their performance at WEFTEC and our newest inductees to the Golden Manhole Society and the 7S will be announced and honored. This is a ticketed event and includes a meal. Please remember to purchase and bring your ticket with you.

Flowing Together: Connecting the Water Workforce



SILENT AUCTION

Attract More People to Your Booth and Help Provide Safe Water through CSWEA's Global Water Stewardship

www.globalstewardship.org



GLOBAL WATER
STEWARDSHIP

Donate an item to the Silent Auction

This year, auction items donated by exhibitors will be displayed in the Exhibit Hall area with a "CSWEA Global Water Stewardship Silent Auction" indication at each participating exhibitor's booth. A master list of auction items, exhibitor's name and booth number will also be displayed at the conference.

Join your fellow exhibitors in supporting this worthy global CSWEA initiative and donate an item... and increase your booth traffic at the same time!

Past Donations Include:

| | | | |
|-----------------|-------------------------|---------------|-------------------------|
| Golf Clubs | Golf Packages | Cameras | iPad or Android Tablets |
| Tools | Wine and Cheese Baskets | Arts & Crafts | Sporting Event Tickets |
| Wildlife Prints | Sports Memorabilia | Fishing Trips | Concert Tickets |

Contact Jackie Strait for details (651-659-7734, jstrait@hrgreen.com)

NEW THINKING. BETTER BUILT. THE ORBITGRINDER.

PROTECTS PUMPS AND SYSTEMS.
SOLIDS REDUCTION CONSTANTLY IMPROVED.

- + Consistent Macerating Results
- + Adjustable Maceration
- + Large Selection of Component Materials
- + Energy Efficient
- + Ease of Maintenance (MIP®)



LEARN MORE AT
www.boerger.com

BÖRGER
EXCELLENCE - MADE TO LAST



Municipal Representatives:



Technical Program

| WEDNESDAY, MAY 20, 2026 | | | | | |
|-------------------------|---|---|--|---|--|
| 8:00 am-9:00 am | Keynote Speaker: Racquel Vaske | | | | |
| SESSION | A | B | C | D | E |
| | ADVANCES IN AERATION STRATEGIES | BIOSOLIDS | OPTIMIZATION | ARTIFICIAL INTELLIGENCE AND DIGITAL SOLUTIONS | COLLECTION SYSTEMS AND CONVEYANCE |
| LOCATION | Meeting Room 2 | Meeting Room 3 | Meeting Room 4 | Meeting Room 5 | Meeting Room 6 |
| Moderator | | | | | |
| YP Moderator | | | | | |
| 9:00 am-9:30 am | Advanced Aeration Control in Action: Diagnosing and Resolving Infrastructure Limitations Bryan Coday , Carollo Engineers | Got Options? A Case Study on Biosolids Adoptive Planning John Borghesi , Jacobs | Optimizing Suspended Solids Removal in Secondary Clarifiers from DAS Systems Will Martin , Hazen and Sawyer | Let's Get Digital: Tools for Efficient Startup and Optimization Jennifer Loconsole , Black & Veatch | Met Council's Strategic Approach to Condition Assessment of Inverted Siphons and Forcemains Jeff Schwarz , Metropolitan Council Environmental Services |
| 9:30 am-10:00 am | Full-Scale Low DO Operation Lee Pinkerton , Metropolitan Council Environmental Services | River Falls WWTF Biosolids Case Study: Transferring from Regional Facility to Starting Its Own Biosolids Program Ryan Yentz , Strand Associates, Inc. | Nanobubble Pretreatment: Breaking the Upset Cycle and Intensifying Nutrient Removal in Water-Stressed Regions John Crisman , Moleaer | Using AI to Determine the Root Cause of Storm Overflows: A Case Study with Southern Water James Ogden , StormHarvester | Pumping up Performance for Lift Station Rehab Projects Weston Engel , Carollo Engineers |
| 10:00 am-11:00 am | Break/Poster Session I | | | | |
| 11:00 am-11:30 am | Cut the Air, Keep the Oxygen: Secrets to Efficient Aeration Bob Kisler , Hoffman & Lamson | Full-Scale Implementation of Anaerobic Digestion with MHP Stephanie Cope , Jacobs | Advancing Energy Resilience and Optimization in Wastewater Utilities: Lessons from a Comprehensive Facilities and Energy Planning Approach Marcus Bush , TYLin | Integration of Digital Twins and Machine Learning for Real-Time Wastewater Treatment Optimization Anjan Goswami , Brown & Caldwell | Catch the Wave! Relief Force Main Planning & Operation with Surge Analysis Chase Przybylski , MSA Professional Services |
| 11:30 am-12:00 pm | Optimizing Aeration Through Integrated System Modeling Colin Fitzgerald , Jacobs | Can Pyrolysis Solve the PFAS Problem? Test Results from Two Biosolids Studies Lloyd Winchell , Brown & Caldwell | Simultaneous Nitrification-Denitrification at NEW Water Gretchen Gutenberger , Black & Veatch | Machine Learning Insights into Methane Inhibition Caused by Quaternary Ammonium Compounds (QACs) in Anaerobic Digestion Zihao Lu , Marquette University | Inflow & Infiltration (I&I) Management: Drivers, Tools, and Real-World Outcomes Brendan Ward , HDR |
| 12:00 pm-1:00 pm | Exhibitors Lunch | | | | |
| SESSION | F | G | H | I | J |
| | TAKE A STEP: WHOLISTIC PLANNING | FACILITY DESIGN | DISINFECTION | ASSET MANAGEMENT | COLLECTION SYSTEM SAFETY |
| LOCATION | Meeting Room 2 | Meeting Room 3 | Meeting Room 4 | Meeting Room 5 | Meeting Room 6 |
| Moderator | | | | | |
| YP Moderator | | | | | |
| 1:00 pm-1:30 pm | Applying the Water Sector Climate Emissions Guidelines: Practical Lessons from Halton Region David Ponder , Eddyline Strategies | Adapting Existing Facilities to Address Multiple Long-Term Needs Evan Hunsanger , Strand Associates, Inc. | Optimization of Disinfection Instrumentation and Control Adam Sealock , Metropolitan Council Environmental Services | What's Coming Next: Evolving Asset-Management Requirements for Utilities Maithilee Das Lappin , TYLin | Flying Into the Future Rafael Estrada Moncada , SEH |
| 1:30 pm-2:00 pm | Alternative Water Supplies for Data Centers Robert Mccandless , Stantec | Regionalization, we are all in this together! Paul Saffert , Bolton & Menk, Inc. | Mankato Disinfection & Digestion Imprpmnts: Navigating Disease, Delays, & Disruptions with Direction & Dialogue Josh Gad , City of Mankato | Modernizing Water & Sewer Asset Decisions: A Case Study in Kenosha Water Utility's Digital Transformation James Kelleher , APX10 | Conveyance System Rehabilitation Prioritizes Operator Safety While Maximizing Community Value Matt Eberhardt , Faith Infrastructure & Environment, LLC |
| 2:00 pm-2:30 pm | Break/Poster Session II | | | | |
| | POLLUTANTS OF EMERGING CONCERN | FACILITY DESIGN | INTENSIFICATION | ADVANCES IN IMPLEMENTATION | WATERSHED MANAGEMENT |
| 2:30 pm-3:00 pm | A Comparative Analysis of Sediment Microplastics Isolation Unit (SMIU) and Chemical Dispersant Methods Emeka Ngene , University of Minnesota Duluth | Designing Process Control Pumping with Field Data and Modeling Software Allen Williams , Donohue & Associates, Inc. | Pushing the Boundaries of Convention: Process Intensification for Achieving Nutrient Removal Limits Colin Fitzgerald , Jacobs | Preparing the Operator - Excited Ownership through Inclusive Project Commissioning Leslee Storlie , Hazen and Sawyer | Prediction of Future River Floods and Droughts in Minnesota Nigel Pickering , Geosyntec Consultants |
| 3:00 pm-3:30 pm | Sulfate Removal from Wastewater: Fate in Secondary Treatment and Design of Tertiary Treatment Facilities McKenna Farmer , Black & Veatch | Controlling WRRF Odors: Using a Plantwide Level of Service Based Approach Isabel Reams , Hazen and Sawyer | Process Intensification at Winona, MN: Operational and Design Insights from InDENSE and Nuvoda Full-Scale Pilots Susan Danzl , SEH | Modernizing Construction Cost Estimation: Lessons Learned and Future Directions Benjamin Burroughs , Arcadis | Milwaukee MSD's Response to the August 9-10 Historic Flood Micki Klappa-Sullivan , Milwaukee Metropolitan Sewerage District |

Technical Program

| THURSDAY, MAY 21, 2026 | | | | | |
|---|---|--|--|---|--|
| Annual Member Association Business Meetings | | | | | |
| SESSION | K | L | M | N | O |
| | R&D AND NOVEL APPROACHES | PFAS | NUTRIENTS | OPERATIONS | FILTRATION |
| LOCATION | Meeting Room 3 | Meeting Room 4 | Meeting Room 5 | Meeting Room 6 | Meeting Rooms 7-8 |
| Moderator | | | | | |
| YP Moderator | | | | | |
| 9:00 am-9:30 am | A New Lens to See Carbon: Full-Scale Bio-Electrochemical Sensor Trial Nathaniel Stein, Ovivo USA LLC | Targeting PFAS Reduction: Leachate, Filtrate, or Biosolids? Patrick McNamara, Black & Veatch | A Workable TP Trade to Meet 0.075 mg/L Eric Lynne, Donohue & Associates, Inc. | Benefits of Using Microscopes to Aid in Wastewater Operations Adib Amini, University of Wisconsin-Madison | Filtering Out the Nonsense: A Collaborative Approach to Filter Renewal and Innovative Contaminant Removal Patrick Haney, Stanley Consultants |
| 9:30 am-10:00 am | Internal Substrate Selection of Granules in A Flow-Through Activated Sludge System via Biological Selectors Kam Law, Donohue & Associates, Inc. | Study of PFAS in Domestic Wastewater in Minnesota Elijah Stuber, City of St. Cloud | Holistic Approach Provides Optimized Low-Level Phosphorus Removal at the City of Marshfield WWTP Troy Larson, Strand Associates, Inc. | | Filtering for Clarity: What Years of Real Data Tell Us About Low-Level TP and TSS Removal Matthew Castillo, MSA Professional Services |
| 10:00 am-11:00 am | Break | | | | |
| 11:00 am-11:30 am | Using Fingerprint Soft Sensor to Monitor and Control Biofilm Thickness in Membrane Aerated Biofilm Reactors (MABRs) Yi Cao, Carollo Engineers | Life-Cycle Environmental Impacts of Removing and Destroying PFAS from Wastewater Effluent Scott Kyser, Minnesota Pollution Control Agency | Blue Lake EBPR Upset Investigation Hannah Molitor, Metropolitan Council Environmental Services | Sniffing Out H ₂ S: Smarter Monitoring for Proactive Control Jonathan Kolweier, Fox Metro Water Reclamation District | Novel Uses of Manganese Greensand for Hydrogen Sulfide Treatment in Wastewater Austin Konrath, University of Minnesota Duluth |
| 11:30 am-12:00 pm | Improving Nitrogen Recovery Efficiency from Wastewater by Electrodialysis Using Bipolar Membranes Tyler Anderson, University of Wisconsin-Madison | The Importance of Collaboration in Regional Concept Pilot Planning Kelsey Klucas, MnTAP | Activating Steel Slag into a New Paradigm for Nutrient Removal Jonathan Teaford, Green Steel Environmental | CSWEA Operations Challenge & Tips for Attending CSWEA Operations Challenge Team | Diagnosing Disc Filters Tom Crouse, Donohue & Associates, Inc. |
| 12:00 pm-1:00 pm | Association Luncheon | | | | |
| SESSION | | P | Q | R | S |
| | | R2E | INDUSTRIAL TREATMENT | NUTRIENTS | ENGINEERING ETHICS |
| LOCATION | | Meeting Room 4 | Meeting Room 5 | Meeting Room 6 | Meeting Rooms 7-8 |
| Moderators | | | | | |
| YP Moderator | | | | | |
| 1:00 pm-1:30 pm | | Pilot Results for a Novel Decentralized Treatment System for Resource Recovery from High-Strength Food and Beverage Waste Kendall A.B. Johnson, University of Minnesota, Twin Cities | What Makes a Significant Industrial User (SIU) - Case Study: Castle Danger Brewery in Two Harbors Luke Heikkila, Bolton & Menk, Inc. | Nitrogen Removal Toolkit - Guide to Informed Planning Eric Redmond, Black & Veatch | Two-Hour Ethics Seminar: Where'd I Go Wrong? Top Ethics Issues for MN Engineers Kristine A. Kubes, Kubes Law Office, PLLC. |
| 1:30 pm-2:00 pm | | Owatonna Biogas Utilization - Renewable Natural Gas (RNG) Quality for Direct Injection to the Grid Jason Benson, AE2S | Losing the Leinie's Load Al Robertsen, AE2S | Densified Activated Sludge - Unlocking the fullpotential of MBR Daniel Coufts, Veolia Water Tech | |
| No Break | | | | | |
| 2:00 pm-2:30 pm | | Sustainable Resource Recovery at the Metropolitan Wastewater Treatment Plant David Quast, SEH | Impact of Landfill Leachate on UVT and Nitrification at a Municipal WRRF Kayla Bauhs, Brown and Caldwell | Assessing the Benefits of MABR for Cold Climates Brendan Wolohan, Carollo Engineers | |
| 2:30 pm-3:00 pm | | Rerouting Towards Energy Neutrality: Carbon Diversion with TripleA Settler Anndee Huff Chester, Brown and Caldwell | Case Study: Advanced, Onsite Pretreatment for Dairy Processing Wastewater with the Torrent3 Treatment System Paige Peters, Rapid Radicals Technology, Inc. | A Tale of Two Retrofits: How the MOB Process Enabled Cold-Weather Nitrification at Two MN WWTPs Erik Anderson, Nevada | |

Presenters

KEYNOTE PRESENTER

Wednesday, May 20th | 8:00 AM

RACQUEL VASKE



Racquel Vaske serves as the General Manager of Saint Paul Regional Water Services (SPRWS) in Minnesota. In this role, she assists in long-range strategy development

and implementation affecting the water supply, treatment, and distribution of reliable, high-quality drinking water to over 450,000 customers across 14 cities. With an extensive background in human resources, Racquel prioritizes cultivating a work environment focused on employee engagement and development, recognizing that a supported workforce is essential to delivering exceptional service. Externally, she places a high value on building strong networks and partnerships within the communities SPRWS serves and throughout the water industry, believing these collaborations are critical to understanding customer needs and providing equitable, transparent, and trusted service.

Racquel has obtained her Minnesota Water Operator Class C certification and completed fellowships with the Center for Water Security and Cooperation and Duke University's Water Innovation Leadership Development Program. She also holds a master's degree from the University of Minnesota Carlson School of Management in Human Resources, along with dual bachelor's degrees in Human Resources and Public Nonprofit Management. Building Pride, Possibility, and Purpose: Connecting the Water Workforce for the Future A strong water workforce doesn't happen by accident; it is intentionally built. This keynote will explore how organizations in the water industry can strengthen connection, resilience, and performance by investing in the people who do the work. Drawing from real-world leadership experience, the presentation will highlight the value of "marketing" our work internally to create pride and purpose, designing workplace environments that foster innovation and collaboration, and aligning pay incentives to encourage continuous learning and cross-training.

The session will also challenge traditional assumptions about job qualifications and career pathways, encouraging an open mindset toward skills-based hiring and talent development. Attendees will leave with practical ideas and a renewed perspective on how culture, compensation, and workplace design can connect and elevate the water workforce, today and into the future.

SPECIAL GUEST

TRACY EKOLA, P.E. | WEF TRUSTEE



Tracy Ekola, P.E. is a member of the 2025-26 Board of Trustees for the Water Environment Federation (WEF).

Ekola serves as vice president and

Midwest senior director for Brown and Caldwell. As an executive with more than 30 years of experience in environmental engineering and business leadership, Ekola provides clear, effective communication and collaboration to maintain a positive forward-thinking environment. Her leadership experience has focused on organizational strategy, innovation and utility performance, regional and national market analyses, risk management, project management improvement processes, succession planning and leadership training and development. With an extensive background in planning, design, and construction of wastewater treatment facilities, she has worked in various roles from on-site engineer to key leadership roles in both public sector and private/employee-owned organizations. Ekola has worked with industrial clients and public utilities addressing regulatory challenges, technology evaluation, developing innovative utility management approaches, program delivery/implementation, and capital improvement program development.

Ekola has been an active member of WEF and Central States Water Environment Association participating in various committees and leadership roles spanning almost three decades. Ekola has served on the WEF House of Delegates as a delegate-at-large and a second term as a delegate for CSWEA. She served on the House of Delegates Budget Committee and multiple

HOD workgroups. She has served as the Conveyance and Watershed Community Director and recently as Director for multiple task forces for the Community Leadership Council. She has also served on multiple WEF committees including Government Affairs, Utility Management, and Program Community. Tracy has also been an active participant in guiding local, state, and national level regulations. In collaboration with utilities and supporting organizations, she has provided input on various topics related to water quality, wastewater treatment, biosolids management, and land application to strive for cost-effective, innovative solutions that are protective of the environment. Collaboration is key to her success in working alongside utilities and their industry partners to evaluate scenarios that benefit the community, stakeholders, and industry partners.

Ekola graduated with a bachelor of civil engineering from the University of Minnesota, and Executive Education Vistage International at Stanford Graduate School of Business. She resides in Minnesota with her husband, who works for the state in natural-resources and forestry planning. They enjoy working and playing in the great outdoors along with their two sons, who are employed as electrical and mechanical engineers.

OPERATIONS TRACK

Thursday, May 21st | 9:00 AM – 12:00 PM

Session 1 – Benefits of Using Microscopes to Aid in Wastewater Operations

Presenter: Adib Amini, PhD, PE, ENV SP, BCEE; and NEW Water Operations Staff
Duration: 1 hour

This session will discuss how use of microscopes can benefit wastewater engineering and operations, simple methods one can use, examples of what wastewater samples look like, examples of bacteria that may be seen, and ways to begin use of this powerful tool. The session will be presented in conjunction with Metropolitan Council Environment Services Operations Staff.

Presenters

Session 2 – Sniffing Out H₂S: Smarter Monitoring for Proactive Control

Presenters: Jonathan Kolweier, Fox Metro Water Reclamation District

Duration: 30 minutes

Wastewater treatment plants and collection systems are seeing rapid improvements in instrumentation and controls that can make operations easier, more reliable, more efficient, and safer. This presentation will showcase practical monitoring tools and control strategies that help operators catch problems sooner, better understand their process, and see how monitored variables affect intended outcomes.

Session 3 – CSWEA Operations Challenge & Tips for Attending

Presenters: CSWEA Operations Team

Duration: 30 minutes

This session will be a discussion led by the operations teams that will discuss how they use professional organization participation to network, learn and bring value to their employers. They will share their experiences being a part of the Ops Challenge team. The discussion will also highlight some helpful advice on how to make case for yourself being part of the team and participating in the challenge. Informing employers of the benefits can be the first step in being a part of this phenomenal networking and learning opportunity.

ETHICS TRACK

Thursday, May 21 st | 1:00 PM – 3:00 PM

Where'd I Go Wrong? Top Ethics Issues for MN Engineers

Presenter: Kristine A. Kubes, Esq. | Kubes Law Office, PLLC

KRISTINE A. KUBES, ESQ. | KUBES LAW OFFICE, PLLC



Bio: Attorney Kristine A. Kubes is principal of Kubes Law Office, PLLC, serving design and construction professionals through all stages of a project – from contracts to payment issues, liens, risk

management, defense of professional liability claims. She also represents professionals before their respective licensing Boards. Kristine is a litigator licensed to practice before the U.S. Supreme Court, a mediator, and an educator on construction, design, and ethics issues. Kristine is Past National Chair of the American

Bar Association Forum on Construction Law. She served as a public member on the MN Board of AELSLAGID from 2006-2013, during which she served two terms as Board Chair from 2009-2011. Daughter of a teacher and a carpenter, Kristine uses the lessons they taught her every day.

PLANNING, DESIGNING, & DELIVERING SUSTAINABLE SOLUTIONS

THE TRUSTED PARTNER –
Helping clients make informed decisions

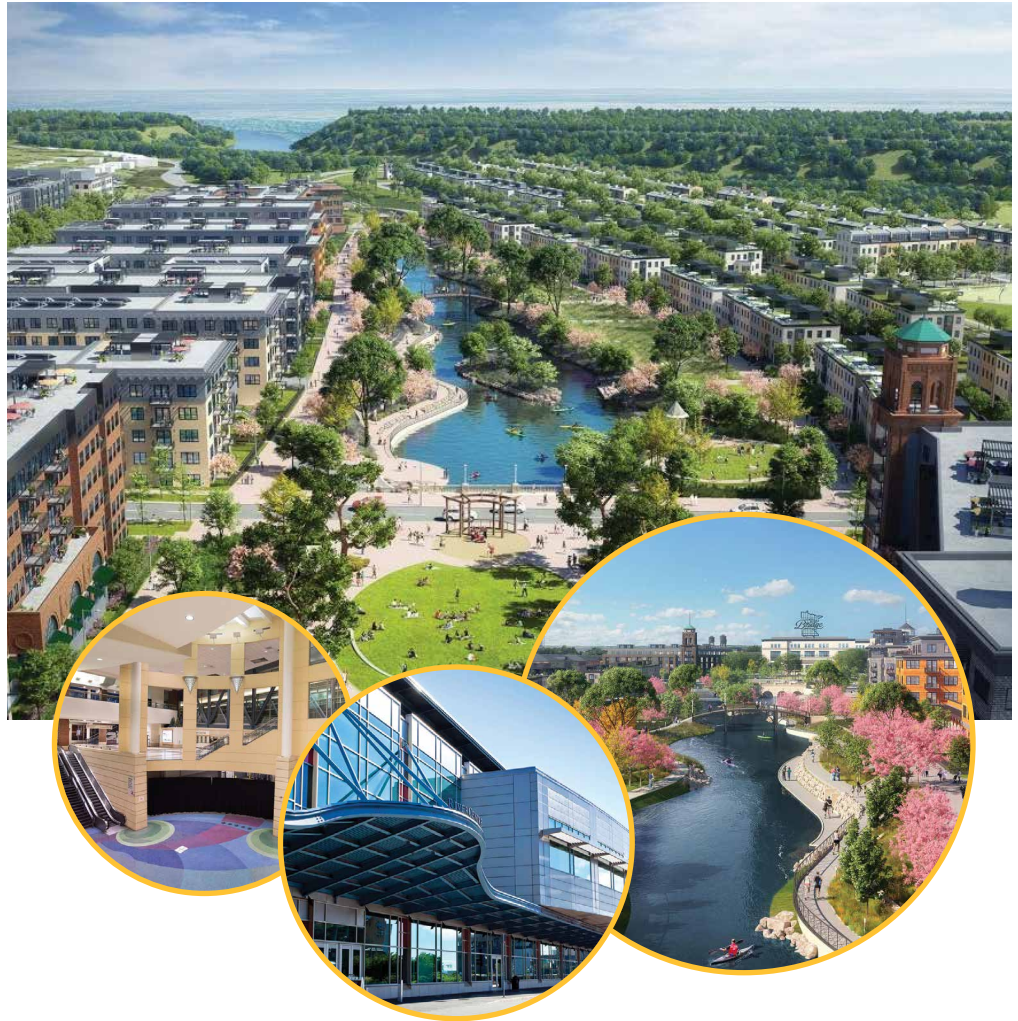
TROTTER
and
ASSOCIATES, INC.
CONSULTING ENGINEERS

trotter-inc.com

Venue

SAINT PAUL RIVERCENTRE
175 West Kellogg Boulevard
Saint Paul, MN 55102

The conference will be held at Saint Paul RiverCentre in Saint Paul, MN. Renowned for its leadership in sustainability, the venue was designed by Hammel Green and Abrahamson, Inc. and is a renowned location for events of all types. It was the first building to achieve sustainability certifications from LEED, Green Globes and APEX/ASTM, and part of a campus that was one of the first venues to offer front of house organics composting to its guests. For more information, go to www.rivercentre.org.



Hotel Information



There is the opportunity to book rooms a special CSWEA rate at two locations in St. Paul this year.

The Hampton Inn & Suites – Downtown St. Paul is located at 200 7th Street West, St. Paul, MN 55102.

Rooms are available for reservation.

Scan QR code or call 651-224-7400.

Book a standard room for \$139 a night. Room nights available on May 18-21.

Book by April 27th to lock in the special rate. Valet parking available for \$26 per night.

The Saint Paul Hotel is on 350 Market Street, St. Paul MN 55102. Book a standard room for the CSWEA rate of \$159. Rooms are available for reservation at www.saintpaulhotel.com and enter Date Range;

Drop down for Code Type, choose Group/Code; enter the group code in CODE - 4736274.

CSWEA rates are available only from May 18-May 21. Book by April 20.

We expect that there will be great demand for these rooms, so please book early.



THE SAINT PAUL HOTEL



[Click HERE to return to Table of Contents](#)

www.cswea.org

ATTENDEE REGISTRATION FORM

FULL CONFERENCE REGISTRATION

Includes Tuesday Night Social, Exhibits, Technical Sessions, Wednesday Exhibitors Lunch, Thursday Exhibitors Reception and Annual Awards Event. Full Conference Registration also includes all meals on Wednesday, State Section Business Meeting, and Annual Association Meeting.

| | Before April 24 | After April 24 | AMOUNT |
|----------------|-----------------|----------------|--------|
| Member | \$515 | \$575 | |
| Non-Member [1] | \$535 | \$585 | |
| Retiree | \$315 | \$345 | |
| Student | \$175 | \$175 | |

BASIC CONFERENCE REGISTRATION

Includes Tuesday Night Social, Exhibits, Technical Sessions, Exhibitors Lunch, and Wednesday Exhibitors Reception. Sit-down meals on Wednesday and Thursday must be purchased separately.

| | Before April 24 | After April 24 | AMOUNT |
|----------------|-----------------|----------------|--------|
| Member | \$380 | \$405 | |
| Non-Member [1] | \$410 | \$435 | |
| Retiree | \$190 | \$210 | |
| Student | \$ 50 | \$ 50 | |

ONE DAY REGISTRATION

Wednesday: Includes Thursday Night Social, Exhibits, Technical Sessions, Exhibitors Lunch, and Exhibitors Reception. Sit-down meals must be purchased separately.

Thursday: Includes Exhibits and Technical Sessions. Sit-down meals must be purchased separately.

| | Before April 24 | After April 24 | AMOUNT |
|------------------------|-----------------|----------------|--------|
| Wed - Member | \$230 | \$255 | |
| Wed - Non-Member [1] | \$260 | \$285 | |
| Thurs - Member | \$230 | \$255 | |
| Thurs - Non-Member [1] | \$260 | \$285 | |

EVENTS AND MEALS (A LA CARTE)

Please circle event & meal selections for you and any guest/spouse who may be joining you for an event or meal.

| ATTENDEE OR GUEST NAME | EVENTS | | | | | | | EVENTS W/MEALS | | | | | TOTAL |
|------------------------|-----------|-------------|-----------------|-------------|-----------------|-------------------------|------------|--------------------------------|----------------------------|--------------------|-----------|----------------|-------|
| | YP SUMMIT | GOLF OUTING | STORMWATER TOUR | 5K RUN/WALK | SERVICE PROJECT | TUESDAY SOCIAL (GUESTS) | PLANT TOUR | STATE SECTION BUSINESS MEETING | ANNUAL ASSOCIATION MEETING | ANNUAL AWARD EVENT | ALL MEALS | BANQUET CHOICE | |
| | \$30 | \$90 | \$30 | \$20 | N/C | \$25 | N/C | \$25 | \$35 | \$75 | \$135 | S C F V | |
| | \$30 | \$90 | \$30 | \$20 | N/C | \$25 | N/C | \$25 | \$35 | \$75 | \$135 | S C F V | |
| | \$30 | \$90 | \$30 | \$20 | N/C | \$25 | N/C | \$25 | \$35 | \$75 | \$135 | S C F V | |
| | \$30 | \$90 | \$30 | \$20 | N/C | \$25 | N/C | \$25 | \$35 | \$75 | \$135 | S C F V | |
| | \$30 | \$90 | \$30 | \$20 | N/C | \$25 | N/C | \$25 | \$35 | \$75 | \$135 | S C F V | |

[1] Includes one (1) year of membership to CSWEA.

[2] Guest/Spouse Registration includes Meet & Greet, Exhibitor Reception and Refreshments in Exhibit Hall.

[S] Top Sirloin, [C] Champagne Chicken, [F] Potato Crusted Walleye, [V] Roasted Vegetable Strudel.

Global Water Stewardship Donation \$ _____

GRAND TOTAL \$ _____

Name _____

Employer _____

Address _____

City _____ State _____ ZIP _____

Phone _____

Email _____

WEF Member Number _____

New Member (within last year) Yes No

Operator Number (if applicable) _____

Are you a Young Professional (less than 36 years old) Yes No Do you want to become more active in CSWEA? Yes

Dietary Restrictions/Special Accommodations _____

Golf Partners _____

Would you like to donate an item to the CSWEA Global Water Stewardship Silent Auction Yes

Make Checks Payable to CENTRAL STATES WATER ENVIRONMENT ASSOCIATION | 1021 Alexandra Blvd, Crystal Lake, IL 60014

Questions?

Registration: Amy Haque – 855-692-7932 x102 | ahaque@cswea.org

[Click HERE to return to Table of Contents](#)

www.cswea.org

UTILITY REGISTRATION FORM

Contact Person _____ Utility _____
 Address _____ City _____ State _____ ZIP _____
 Phone _____ Email _____

UTILITY REGISTRATION [1]

Registration includes Tuesday Night Social, Exhibits, Technical Sessions, Box Lunch, and Exhibitors' Reception. (Registration does not include the State Section Business Meeting, Annual Association Meeting, Annual Awards Event, or other Events. Register for them below).

| | Before April 24 | After April 24 | AMOUNT |
|-----------------------------------|-----------------|----------------|--------|
| Collection System Only or 0-1 MGD | \$300 | \$350 | |
| 1 - 5 MGD | \$500 | \$600 | |
| 5 - 20 MGD | \$900 | \$1,000 | |
| 20 - 50 MGD | \$2,000 | \$2,500 | |
| > 50 MGD | \$3,000 | \$3,500 | |

UTILITY ATTENDEE REGISTRATION INFO & A LA CARTE SELECTIONS

Please mark the days of attendance, circle events and meals for each utility attendee and indicate the total for each attendee to the right.

| ATTENDEE NAME | ATTENDING | | | EVENTS | | | | | | | EVENTS w/ MEALS [2] | | | | | TOTAL |
|---------------|-----------|-------|------|-----------|-------------|-----------------|-----------------|-------------|-------------------------|------------|--------------------------------|----------------------------|--------------------|-----------|----------------|-------|
| | WED | THURS | BOTH | YP SUMMIT | GOLF OUTING | STORMWATER TOUR | SERVICE PROJECT | 5K RUN/WALK | TUESDAY SOCIAL (GUESTS) | PLANT TOUR | STATE SECTION BUSINESS MEETING | ANNUAL ASSOCIATION MEETING | ANNUAL AWARD EVENT | ALL MEALS | BANQUET CHOICE | |
| | | | | \$30 | \$90 | \$30 | N/C | \$20 | \$25 | N/C | \$20 | \$25 | \$35 | \$80 | S C F V | |
| | | | | \$30 | \$90 | \$30 | N/C | \$20 | \$25 | N/C | \$20 | \$25 | \$35 | \$80 | S C F V | |
| | | | | \$30 | \$90 | \$30 | N/C | \$20 | \$25 | N/C | \$20 | \$25 | \$35 | \$80 | S C F V | |
| | | | | \$30 | \$90 | \$30 | N/C | \$20 | \$25 | N/C | \$20 | \$25 | \$35 | \$80 | S C F V | |
| | | | | \$30 | \$90 | \$30 | N/C | \$20 | \$25 | N/C | \$20 | \$25 | \$35 | \$80 | S C F V | |
| | | | | \$30 | \$90 | \$30 | N/C | \$20 | \$25 | N/C | \$20 | \$25 | \$35 | \$80 | S C F V | |
| | | | | \$30 | \$90 | \$30 | N/C | \$20 | \$25 | N/C | \$20 | \$25 | \$35 | \$80 | S C F V | |

Global Water Stewardship Donation \$ _____

[1] Registration based on NPDES permitted flow.

[2] Rates reflect maximum rates allowable on per diem or GSA rates. Only Available to members registered as utilities.

GRAND TOTAL \$ _____

[S] Top Sirloin, [C] Champagne Chicken, [F] Potato Crusted Walleye, [V] Roasted Vegetable Strudel.

GUEST & SPOUSE REGISTRATIONS

Please use the Attendee Form on previous page to purchase all Guest/Spouse event and meal tickets.

List any new WEF/CSWEA Members from the last year: _____

List all Young Professionals (35 years old or younger): _____

List attendees that would like to be more active in CSWEA: _____

Dietary Restrictions/Special Accommodations _____

Please list name with request _____

Golf Partners _____

Would you like to donate an item to the CSWEA Global Water Stewardship Silent Auction Yes

Make Checks Payable to CENTRAL STATES WATER ENVIRONMENT ASSOCIATION | 1021 Alexandra Blvd, Crystal Lake, IL 60014

Questions? Registration: Amy Haque – 855-692-7932 x102 | ahaque@cswea.org

Conference Sponsors

Platinum Sponsors



Gold Sponsor



Silver Sponsors



Bronze Sponsors



Meet & Greet Sponsors



YP Summit



WiFi Sponsor



Golf Sponsors



Jim Shaw Memorial 5K Run/Walk



Association Luncheon Sponsor





**WASTEWATER TREATMENT
FACILITY IMPROVEMENTS
CITY OF PERRY, IOWA**

SOLUTION DRIVEN

There is no such thing as a one-size-fits-all solution. We recognize that every project and client is unique and we treat them that way.

www.Bolton-Menk.com



INTEGRATED PROCESS SOLUTIONS

We are a full-service professional integration firm, specializing in industrial automation and controls for water, wastewater, and environmental treatment systems.

ips@ipsamerica.biz

CORPORATE HQ

34696 412th St SE
Fosston, MN
56542
218.435.1703

ALBANY, MN

411 Railroad Ave
Albany, MN
56307
320.345.1457

GRAND FORKS, ND

1600 47th Ave S #B
Grand Forks, ND
58201
218.791.2996

WAUNAKEE, WI

315 Raemisch Rd #D
Waunakee, WI
53597
608.849.4375

ipsamerica.biz

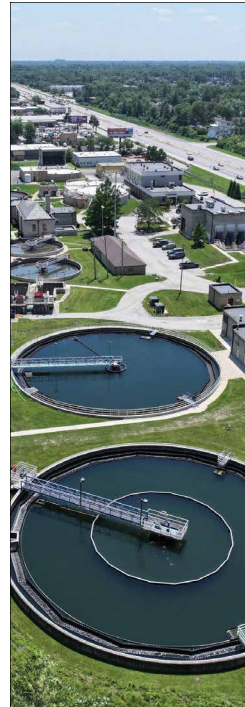


Infrastructure Professionals

Elevating infrastructure, *together.*



cmtengr.com | [@cmtengrs](https://twitter.com/cmtengrs)



BAXTER & WOODMAN
Consulting Engineers

YOUR PARTNER IN WATER STEWARDSHIP

Providing innovative **engineering, construction, and maintenance services** to meet the evolving needs of the water industry.



WASTEWATER



WATER



STORMWATER



ADVANCING >>
INFRASTRUCTURE FOR A GREATER
TOMORROW
baxterwoodman.com



Realize More[®]

We recognize that infrastructure investments of the past still have value today. By analyzing your systems and understanding your processes, we identify - and maximize - your existing assets.

If you're trusted to protect public health or the environment, **we can help.**

Hazen75

hazenandsawyer.com



DEPENDABLE POWER STARTS HERE.

BUY IT. RENT IT. SERVICE IT.
Ziegler Power Systems has your generator needs covered.

24/7 EMERGENCY SERVICE AVAILABLE:

SHAKOPEE, MN

888.320.4292



zieglercat.com/power

WEFTEC 2025 OPERATIONS CHALLENGE

The Pumpers Did It Again - 1st in Division II Lab Event

By Eric Lynne, PWO Representative



Each year at WEFTEC, the Operations (Ops) Challenge showcases the skills and expertise of wastewater professionals from around the world. The Ops Challenge is a competition event where four-person teams compete in five timed and graded wastewater events. This competition is fast-paced, exciting, and promotes teamwork between wastewater professionals.

This year was the 38th annual competition at WEFTEC in Chicago. This year's competition featured an intense group of 57 teams, including three international teams.

During the Ops Challenge, each team competes for the highest score in collections systems, laboratory, process control, maintenance, and safety events.

- The **process control** event tests mathematical skills and understanding of wastewater treatment processes. The event consists of both written and electronic portions. Teams use GPS-X (a wastewater treatment process simulator) to visualize real-world problem scenarios, making real-time decisions to fix them.

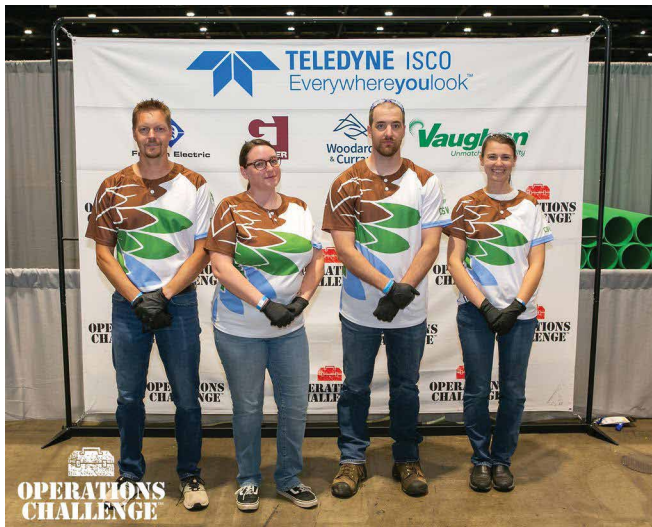
- The **laboratory** event has teams analyze a range of wastewater parameters, and requires competitors to demonstrate their competence in lab-based tasks such as sampling, sample preparation, data collection, data interpretation, and familiarity with common laboratory equipment. This year the lab event was refreshed, testing total residual chlorine and orthophosphate.
- The **safety** event requires teams to respond to a hypothetical emergency where a co-worker requires extraction from inside a confined space maintenance shaft. Acting as a rescue team, competitors had to safely enter and retrieve the incapacitated co-worker, then diagnose and fix a safety hazard within the confined space, and re-seal the maintenance shaft.
- In the **collection systems** event, teams vigorously cut an 8-inch PVC sewer pipe to fix a leak and then connect a new 4-inch lateral to a simulated pump-around assembled via a Victaulic tower.
- Finally, in the **maintenance** event, teams complete normal maintenance tasks to

diagnose problems at a lift station wet well, readjust a mixing pump, and replace a damaged impeller and pump nozzle. CSWEA had two teams compete at the national competition, the Pumpers and Shovelers. The returning team (Pumpers) advanced to Division II, while the Shovelers remained in Division III with mostly rookie team members.

Our teams proudly represented CSWEA and our sponsors, it was apparent each team gave it their all. Due to our limited ability to practice, CSWEA lags in the physical events, but excels at lab and process control. This was demonstrated when the Pumpers reached 1st Place in the Laboratory Event. This is extra meaningful because this was the new event, showing our group was able to break-down the event, and reassemble the steps in the fastest time with the best accuracy. Of all the events, this is one means the most to operators.

The Shovelers also did very well, placing 4th in their Division III lab event. Both teams scored a respectable 6th place for the written process control event. For added

WEFTEC 2025 OPERATIONS CHALLENGE



recognition, the event awards non-event prizes. This year the Pumpers team received **Best Outfit**, all thanks to Wade Lagle's vision to mimic the Fantastic 4 movie characters but with a pumping theme. Also, our large tri-state fan-base did a fantastic job cheering for the Shovelers, earning them the **Spirit Award**, for their exceptional camaraderie, sportsmanship, and dedication beyond just speed and technical skill in the "Wastewater Olympics."

The teams were coached by Jason Neighbors from Lockport, IL WWTP and Marc Zimmerman from the Janesville, WI WWTP. Jason and Marc put in a great deal of time and effort and did an excellent job coaching. The returning Pumpers team consisted of team captain Kelsey Prall from Red Wing, Alex Krause from Fond du Lac, Wade Lagle from Donohue, and Justin Profancik from Urban & Champaign Sanitary District. The Shovelers

team consisted of captain Jacob Kehring from New Water (Green Bay MSD), Ashley Murr from Resource Renew (Duluth, MN), Luke Markko from the City of Wauconda, IL WWTP, and Emily Lecuyer from Northern Moraine Water Reclamation District (Island Lake, IL).

Both teams performed well during the competition, which is incredibly impressive when you consider most of the other teams practice almost weekly or daily together, while the Pumpers and Shovelers only get together for two training practices prior to WEFTEC. The team members must practice alone and communicate long distance with their team-members and coach with questions or solutions most of the time. The teams practiced in Janesville during two multi-day training events and a couple remote practices.

Many thanks to the Janesville administration team and plant staff for all the help setting up the equipment and for graciously hosting the

training events. Also, a huge thank you to Brent Perz from Baxter & Woodman for spending time coaching an assisting with the process control event.

The two teams would not have been able to compete at this amazing event if it were not for the generosity of sponsors. CSWEA is fortunate to have such great supporters in the organization. With CSWEA being made up of members from WI, MN, and IL and the Pumpers and Shovelers all from different facilities, it is a great way for the team members to connect and form lasting friendships as well as compete at a high energy and high-profile competition.

Thank you to all that made it possible for CSWEA to send two teams to the 2025 Operations Challenge and also for your support!

Anyone interested in learning more about how to be part of the team can reach out to Eric Lynne or any of the past team members. [CS](#)

41st Annual Tri-State Seminar

2026

AUGUST 3-6, 2026

SOUTH POINT HOTEL & CASINO | LAS VEGAS

**Peace,
♥ Love &
Tri-State**



\$99
BEFORE JULY 15

- A chance to visit and learn from over **300** exhibitors
- Choose from over **200** classes with leading experts
- The opportunity to earn up to **24** professional development hours



www.tristateseminar.com

APRIL 16



2026 CSWEA EDUCATION SEMINAR
Monona Terrace | Madison, WI

MAY 19-21



CSWEA 99TH ANNUAL MEETING
Saint Paul RiverCentre | St. Paul, MN

JUNE 4



2026 WI CLASSIC COLLECTIONS SYSTEM SEMINAR
Turner Hall | Watertown, WI

JULY 22



CSWEA CSX 2026
Kalahari Resort | Wisconsin Dells, WI

JULY 30



2026 WI NORTHWOODS COLLECTIONS SYSTEM SEMINAR
Hotel Marshfield | Marshfield, WI

AUGUST 11



WISCONSIN INDUSTRIAL PRETREATMENT SEMINAR
Dale's Weston Lanes & The Mountain Bay Banquet & Conference Center
| Weston, WI

contact us at sehinc.com or 800.325.2055

where **innovation**
meets **impact.**

explore what's possible.

engineers | architects | planners | scientists
clean water. better places. infrastructure renewal. mobility.

SEH

PFAS *RAPID RESPONSE*

PFAS REMOVAL SOLUTIONS FOR MUNICIPALITIES OF ALL SIZES



RAPID RESPONSE



TEMPORARY & PERMANENT TREATMENT



END-TO-END EXPERT ASSISTANCE



WATER SURPLUS

POWERED BY **HAWKINS**



ENGINEERING ENTERPRISES, INC.



WATER WORKS | WASTEWATER | FLOODPLAIN & STORMWATER MANAGEMENT
TRANSPORTATION | MUNICIPAL CONSULTING | LAND SURVEYING



Outstanding Service • Every Client • Every Day

Sugar Grove | Itasca
www.eeiweb.com | (630) 466-6700



HRGreen®



Providing engineering and technical management solutions that **build communities** and **improve lives.**



HRGREEN.COM

WATER + BROADBAND + CONSTRUCTION
ENVIRONMENTAL + GEOSPATIAL + LAND DEVELOPMENT
MUNICIPAL + PLANNING + TRANSPORTATION

National Environmental Contractor



Ranked in ENR. Measured by the projects we deliver.

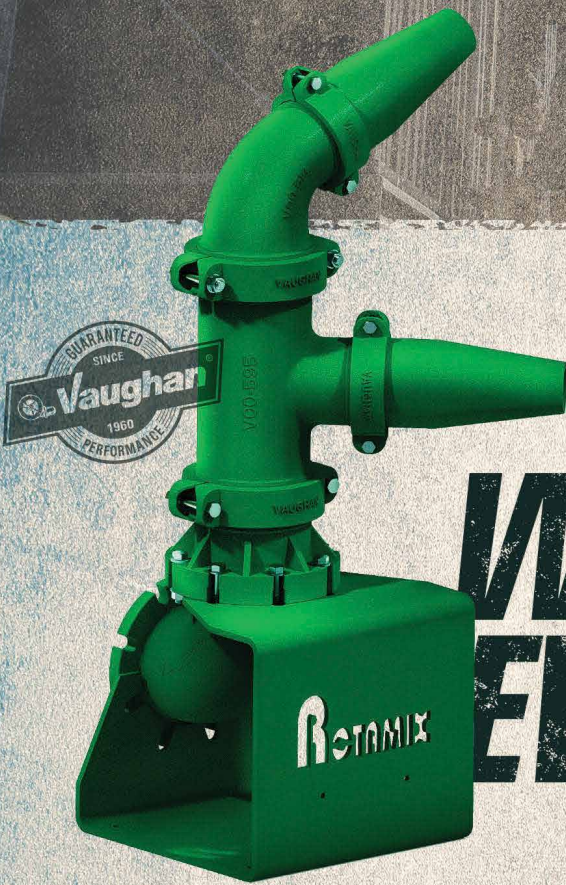


RICELAKE.ORG



Central States Water is made possible by the companies below who convey their important messages on our pages. We thank them for their support of CSWEA and its publication and encourage you to contact them when making your purchasing decisions. To make it easier to contact these companies, we have included the page number of their advertisement, their phone number, and, where applicable, their website.

| COMPANY | PAGE | TELEPHONE | WEBSITE |
|--|------|---------------------------|--|
| Advanced Engineering and Environmental Services (AE2S) | 6 | 763-463-5036 | www.ae2s.com |
| AECOM | 12 | 314-429-0100 | aecom.com |
| Apex Engineering Group | 34 | 701-373-7980 | www.apexenggroup.com |
| Assman Corporation of America | 39 | 888-357-3181 | www.assmann-usa.com |
| Baxter & Woodman, Inc | 56 | 815-459-1260 | www.baxterwoodman.com |
| Boerger, LLC | 45 | 877-726-3743 | www.boerger.com |
| Bolton & Menk, Inc. | 55 | 507-625-4171 | www.bolton-menk.com |
| CDM Smith | 43 | 651-772-1313 | www.cdmsmith.com |
| Clark Dietz, Inc. | 39 | 217-373-8900 | www.clark-dietz.com |
| Crawford, Murphy & Tilly, Inc. | 56 | 217-787-8050 | www.cmtengr.com |
| Dixon Engineering | 23 | 800-327-1578 | www.dixonengineering.net |
| Donohue & Associates, Inc. | 64 | 920-208-0296 | www.donohue-associates.com |
| Electric Pump, Inc. | 14 | 800-211-6432 | www.electricpump.com |
| Energenecs | 9 | 262-377-6360 | www.energenecs.com |
| Engineering Enterprises, Inc. | 61 | 630-466-6700 | www.eeiweb.com |
| Force Flow/Halogen Valve Systems | 7 | 925-686-6700 | www.forceflowscales.com |
| Foth Infrastructure & Environment | 25 | 920-497-2500 | https://www.foth.com |
| Gasvoda and Associates | 63 | 708-891-4400 | www.gasvoda.com |
| Hazen and Sawyer | 56 | 651-256-9534 | https://www.hazenandsawyer.com |
| HR Green, Inc. | 61 | 800-728-7805 | www.hrgreen.com |
| Induron Coatings Inc. | 19 | 800-324-9584/502 548-2518 | www.induron.com |
| InfoSense, Inc. | 23 | 877-747-3245 | www.infosense.com |
| Integrated Process Solutions (IPS) | 55 | 218-435-1703 | https://www.ipsamerica.biz |
| Janssen Machine Company | 34 | 218-493-4470 | https://janssenmachine.com |
| JDV Equipment Corporation | 43 | 973-366-6556 | www.jdvequipment.com |
| JWC Environmental | 20 | 877-873-4392 | www.jwce.com |
| LAI, LTD | 15 | 847-392-0990 | https://lai-ltd.com |
| Lakeside Equipment | 2 | 630-837-5640 | www.lakeside-equipment.com |
| LW Allen/Altronex | 27 | 800-362-7266 | www.lwallen.com |
| Mekco, Inc. | 4 | 920-696-5570 | www.mekco.com |
| Metropolitan Industries | 28 | 815-886-9200 | www.metropolitanind.com |
| MSA Professional Services, Inc. | 39 | 800-362-4505 | www.msa-ps.com |
| Nordic Water | 13 | 877-283-0887 | www.nordicwater.com |
| PAXXO | 3 | 770-502-0055 | www.paxxo.com |
| RELINER/Duran Inc. | 9 | 800-508-6001 | www.reliner.com |
| Rice Lake Construction Group | 61 | 218-546-5519 | https://ricelake.org |
| SEH | 60 | 651-490-2000 | www.sehinc.com |
| Starnet Technologies | 11 | 262-886-0228 | www.starnettech.com |
| Strand Associates, Inc. | 26 | 608-251-4843 | www.strand.com |
| Sulzer | 16 | 888-390-8588 | go.sulzer.com/trusted-xfp |
| Tnemec/Taylor Coating Sales, Inc. | 12 | 708-387-0305 | www.tnemec.com/taylorcoatingcoating |
| TRI-STATE SEMINAR | 59 | | www.tristateseminar.com |
| Trotter & Associates Inc. | 49 | 630-587-0470 | www.trotter-inc.com |
| Unison Solutions, Inc. | 43 | 563-585-0967 | www.unisonsolutions.com |
| USEMCO | 33 | 608-372-5911 | https://www.usemco.com |
| Visu-Sewer, Inc. | 9 | 618-397-9840 | www.visu-sewer.com |
| Waterly | 10 | 833-492-8370 | http://www.waterlyapp.com |
| Ziegler Cat | 56 | 888-320-4292 | www.zieglercat.com/power |



**WE STIR UP
EVERYTHING
BUT TROUBLE.**



Rotamix

For hydraulic mixing without headaches, choose the reliable Vaughan Rotamix System. Blend lower operating and maintenance costs with a more efficient breakdown of solids. Your digesters, sludge storage tanks, and equalization basins won't know what hit them.

*Choose the unmatched reliability of Vaughan.
Free sample CFD's upon request.*



888-249-CHOP | ChopperPumps.com

GUARANTEED PERFORMANCE | NO MOVING PARTS IN THE TANK | FOCUSED MIXING

 **Vaughan**
Unmatched Reliability

LOCAL REP

GASVODA & ASSOCIATES, INC.

1530 Huntington Drive,
Calumet City, IL 60409

Phone: 708-891-4400

Fax: 708-891-5786

info@gasvoda.com

Practical Solutions. Sustainable Outcomes. Across the Water Cycle.



Our employee-owned engineering firm proudly serves clients throughout the Midwest, helping them sustain and improve water systems across the entire water cycle for this generation and generations to come.

